



2022 ANNUAL REPORT

A Publication of the Theodore Roosevelt Medora Foundation





Theodore Roosevelt
MEDORA FOUNDATION

Medora
EXPLORE IT. ADORE IT.

Medora Musical

Bully Pulpit
GOLF COURSE

TABLE OF CONTENTS

INTRODUCTION

About TRMF	3
From the desk of Tim O'Keefe	5
Board of Directors in 2022	7

BULLY SPIRIT AWARD

Mike and Peggy Bullinger	9
--------------------------	---

ACCOMPLISHMENTS

2022 by the Numbers	10
An Elevated Experience	11
Point to Point Park	13
Schafer Point	14
A Historic Partnership	15
We Built This City	17
Fall For Medora	18

GIFT GIVERS

Lifetime of Giving	19
Rough Riders	27
Jr. Rough Riders	33
Business Members	35

FINANCES

Revenue & Development	37
Endowment Financials	38

ENDOWMENTS

Endowed with Entertainment	39
Endowed with Impactful Success	41
Duo Cantabile	43
Scholarships and Awards	44

WHAT'S NEXT

Wild Horse Place	45
Western Heritage	47
Medora Legacy Society	48
Bully Pulpit Area Expansion	49







The Theodore Roosevelt Medora Foundation (TRMF) is a public non-profit organization that was formed in 1986 by a multi-million dollar gift from Harold Schafer and his family – most famously known as the founders of the Gold Seal Company, the maker of Mr. Bubble, Glass Wax and other nationally-known household products.

For Harold and his wife Sheila, the beauty and history of Medora and the Badlands was just too much to let disappear with the sands of time – so he made it his life's work to save it for generations to come. He began his labor of love in 1962 with the renovation of the Rough Riders Hotel and revitalized what we know today as the Medora Musical in 1965.

Harold continued giving to the historic cow town frequented by Theodore Roosevelt, the Marquis de Mores, and many-a rough-and-tumble westerner until his passing in 2001.

Today, we at TRMF strive to accomplish our mission to preserve, present, and serve all that Harold loved about Medora by operating history, education, and entertainment businesses that allow the traveling public to fully enjoy the beautiful North Dakota Badlands.

Through the contributions and teamwork of a board of directors, a full time staff of 80, 450 seasonal employees, over 800 seasonal volunteers, and financial backing from generous supporters, TRMF connects people to Medora for positive, life-changing experiences.



Theodore Roosevelt
MEDORA FOUNDATION

Medora
EXPLORE IT. ADORE IT.

Medora Musical

Bully Pulpit
GOLF COURSE

OUR VISION

WE CONNECT PEOPLE TO HISTORIC MEDORA FOR
POSITIVE, LIFE-CHANGING EXPERIENCES.

OUR MISSION

PRESERVE THE EXPERIENCE OF THE BADLANDS, THE
HISTORIC CHARACTER OF MEDORA AND THE VALUES
AND HERITAGE OF THEODORE ROOSEVELT AND
HAROLD SCHAFER;

PRESENT OPPORTUNITIES FOR OUR GUESTS TO BE
EDUCATED AND INSPIRED THROUGH INTERPRETIVE
PROGRAMS, MUSEUMS AND ATTRACTIONS THAT
FOCUS ON THE OLD WEST, OUR PATRIOTIC HERITAGE,
AND THE LIFE OF THEODORE ROOSEVELT IN THE
BADLANDS;

SERVE THE TRAVELING PUBLIC, PROVIDING FOR
THEIR COMFORT WHILE VISITING HISTORIC MEDORA,
THE BADLANDS AND THEODORE ROOSEVELT
NATIONAL PARK.

OUR VALUES

HAVE **FUN**.

SHOW **RESPECT** FOR PEOPLE AND PLACE.

LIVE LIFE WITH AN **OWNERSHIP** MENTALITY.

ALWAYS BE **GRATEFUL**.

PROMOTE **SALES**.



FROM THE DESK OF TIM O'KEEFE

Dear Friends of Medora:

I've always found it fun and interesting as I meet volunteers, seasonal staff, and visitors, to ask "what's your Medora story"? While each person has a distinctly different byline, there are always definitive common themes held within.

Medora and the Badlands seem to bring a peaceful joy to everyone who visits or stays, something that for most of us keeps us coming back for more.

My wife Becky and I feel it every time we come over the rise and see Painted Canyon, where we first engage the remarkable beauty of the Badlands, and a sense of calm washes over us.

I've always been struck how Medora seems to bring the best out in people, where "North Dakota nice" is truly front and center, and everyone has their best behavior on.

Becky and I first visited Medora 50 years ago on our honeymoon, as guests of my cousin Jim Kack and his wife, Joanne Schafer Kack, Harold's daughter. Harold and Sheila were so proud to shepherd us around Medora, to the Musical, and especially the Zoo of that era, where all the animals came running for treats the minute they saw the Schafer's.

Every now and then I think about Harold and Sheila and reflect upon how they would view the Medora of today, tomorrow, and what the Board of Directors at TRMF are planning.

As Harold was known to be a "dreamer", I have to believe he would be immensely proud and excited, that in many ways Medora and TRMF are actually possibly exceeding where he thought we would be.

I'm a firm believer one of the primary distinctions between the USA and the rest of the world is the degree to which philanthropy is imbedded into our culture and society as a fundamental requirement of who we are as a country. Philanthropy changes how we live in the US for the better each and every day - - and doesn't giving simply make you feel good?

There isn't a better example of such in North Dakota than Medora/TRMF.

What Harold and the Schafer family began in Medora almost 70 years ago, each of you have picked up and taken to new heights. Just this year with your generosity TRMF opened the Point to Point Lazy River, Splash Pad, Bouncing Pad, Pickle Ball courts, and Schafer Point.

The latter [Schafer Point] is where as legend has it, Harold and a young Ed Schafer stood around 60 years ago overlooking Medora when Harold pronounced [paraphrasing] "there's just too much here that must be saved", to which the young boy replied, "What? There is nothing here."

In the years to come, working closely in partnership with the City of Medora, Billings County, the TR Presidential Library, and the TR National Park; the Board of Directors

of TRMF has plans to build a new horse riding operation at the east entrance to Medora where Ranch O Rama currently exists.

In concert with this move, phase two and three of the Point to Point trails will open up, connected to the current trail hike initiated in town by the miniature golf course.

West of the Little Missouri the plan is to build new rodeo grounds, an equine center done in partnership with the North Dakota Cowboy Hall of Fame, an expanded campground heavy on 50 amp sites, horse stalls for the rodeo participants, and other amenities.

Bully Pulpit golf course has been remodeled with three new holes to replace two lost by the flooding near the Little Missouri. New cart paths, a concession stand in construction next year mid course, and other upgrades are in progress.

Across from Bully Pulpit on TRMF land, where the first Dude Ranch in the US was constructed in the early 1800's, a wedding and event center, several cabins, and a sport and trap shooting center are in the early planning stage.

None of this happens without two things in play;

Foremost, these opportunities are a testimony to the generosity and planning of Harold Schafer. As Board members we understand our greatest responsibility to Harold's generosity is to be great stewards of the land he purchased decades ago for TRMF use.

And, none of these plans happen without you, the generous donors who have made TRMF what it is today, and for the tomorrows ahead.

Exciting, vibrant plans, done with purpose to serve not only the traditional older generations who visit Medora, but also targeting the younger families who have begun to make their initial trips to see everything we now have to offer.

Gratitude is so important!

I'm grateful to Randy Hatzenbuehler, the entire team who make TRMF/Medora happen; almost 80 full time employees, 450 seasonal staff this summer, and over 800 volunteers who are the heart of all things Medora.

And to the dedicated colleagues of mine who serve on the TRMF Board of Directors, thank you for your dedicated time in extensive committee meetings, Zoom calls, and Board meetings. When each of you leave Medora and the Badlands, know you are continuing the legacy of Harold and Sheila Schafer, Theodore Roosevelt, and all the Board members and donors who preceded us.

See you on the streets of Medora soon!



Tim O'Keefe
Chair, TRMF Board of Directors

OUR LEADERSHIP

Visionary founders. Leaders of character. A team committed to the TRMF Mission.

The TRMF BOARD OF DIRECTORS



OUR FOUNDERS

Harold Schafer (1912 - 2001) and Sheila Schafer (1925 - 2016)



Tim O'Keefe
Board Chair



Levi Andrist
Board Vice Chair



Michael Zaun
Treasurer/Secretary



Michelle
Mongeon Allen



Rich Becker



Twylah Blotsky



Don Clement



Bruce Furness



Tom Gerhardt



Kristi Hanson



Jody Hodgson



Medora
Sletten Lauf



Doug Mark



Tracy Martin



Laurel Nelson



Kathy Neset



Linda Pancratz



Barry Schafer



Rolf Sletten

The 2022 Bully Spirit Award

MIKE & PEGGY BULLINGER

"Success or failure is caused more by mental attitude than by mental capability."

Mike & Peggy Bullinger didn't just coin those words — they live by them. And it shows not only in Medora but across North Dakota.

Mike & Peggy are the owners of Western Products, a tremendously successful home improvement company based in Fargo. Successful, not thanks to chance, but to hard work — and a hard-scrabble journey we recognize as "the American Dream."

"They made a deal that whenever they bought a new house, the first meal they ate there would be beans and corn," said their daughter Nikki Nelson. "Because that's what they could afford to eat in the early days."

Their hard work paid off — and their success allowed them to give back to communities for which they care, like Medora. Mike & Peggy have generously contributed to numerous projects, including the Little Bully Pulpit Mini Golf Course, the Old Town Hall Theater, the Life Skills Center, and Bully Pulpit Golf Course.

But their embodiment of the Bully Spirit goes far beyond their philanthropy. To better understand it, we spoke to the entire extended Bullinger family and many of their friends. Scan the QR code on the right to see our complete tribute to Mike & Peggy Bullinger, and to see the pair accept the Bully Spirit Award at the 2022 Rough Riders Roundup luncheon in Medora!



Peggy & Mike Bullinger receive the Bully Spirit Award from Randy Hatzenbuehler (right) at the 2022 Rough Riders Roundup Luncheon.



Scan this code to see the 2022 Bully Spirit Award Presentation in its entirety!



2022 *by the numbers*

114,701

*Medora Musical
Attendees*



15,730

*Rounds at Bully
Pulpit Golf Course*



43,667

*Meals at the Pitchfork
Steak Fondue*



35,226

*Nights at our lodging
facilities*



AN ELEVATED EXPERIENCE

The Medora experience is meant to be enjoyed by people of all ages and abilities. That's why we remain committed to a better experience for our guests who are elderly and to families who visit Medora with mobility and sensory disabilities.

That's also why June 8th, 2022, marked a significant date in our vision for Access Medora!

With profound thanks to the Engelstad Foundation and their \$1 million gift, two new high-capacity elevators opened for use at the Burning Hills Amphitheatre. We also owe a thank you to the State of North Dakota. We were awarded a \$1 million Tourism Transportation Grant during the 2021 Legislative Session.

We're also pleased to report that the escalator is being refurbished this spring. Funding for that project was approved during the 2021 legislative session.

Safe, convenient access to the Burning Hills Amphitheatre is critical. Former TRMF board members Hannelore and John Davis say the elevators have been an important addition.

"My wife was in a wheelchair when we went out there last summer," John said. "That was a Godsend with the wheelchair. As you get older you can appreciate things like that."

Access Medora is an ongoing initiative to improve accessibility all over Medora.

The addition of these elevators was the first major project to increase accessibility since the Amphitheatre was rebuilt in 1992.

While they were a great addition to replace golf cars on the ramp and improve the entrance and exit experience from both safety and convenience standpoints, the elevators also serve guests who need to leave unexpectedly. And they offer efficient access for emergency responders.



Each elevator is rated for 33 passengers, but a more practical capacity is about half that number.



Access *Medora*™

YOU MUST NEVER GO AROUND, BUT ALWAYS OVER, UNDER, OR THROUGH!

POINT TO POINT HIKES—THEODORE ROOSEVELT’S FAVORITE GAME—HAD THAT ONE RULE.

.....

Point to Point Park---Medora’s newest attraction—created a lot of laughter and smiles for families as it opened last summer as the ribbon was cut for the grand opening last June.

Point to Point Park is filled with lots of fun activities and is easily accessible from the Badlands Motel.

Visitors splashed and played in the Lazy Lil Mo lazy river and wade-in pool while following the harrowing story of Theodore Roosevelt capturing the boat thieves in the Badlands.

Kids couldn’t get enough of the jump pillow and cooled off on the splash deck.

Extra seating in the shade gave parents a front-row seat to all the fun, including two new pickleball courts!

The new family attractions joined a host of existing activities including Little Bully Pulpit Mini-Golf Course, the Point to Point zip line “Manitou,” and guided hikes on Point to Point Trails with our own Joe Wiegand.

Our goal has always been to connect people to Medora for positive, life-changing experiences,” said TRMF president Randy Hatzenbuhler. “Point to Point Park has been a terrific new way for families to make memories in Medora.”

We would like to acknowledge the Matt & JoAnn Butler Foundation for their generous lead gift of \$2 million as a matching grant challenge to help make Point to Point Park a reality to be enjoyed by families and visitors now and into the future.



SCHAFER POINT



On June 11th, 2022, the ribbon was cut at Schafer Point – a historic location along the Point to Point Trails in Medora.

“The story is legendary, almost mythical,” said TRMF president Randy Hatzenbuehler.

“Based on a true story,” said Ed Schafer to the laughter of those gathered to celebrate, including Nancy, other family, friends and supporters of Medora.

Schafer Point is where, in 1952, Harold Schafer took young Ed to overlook the rundown cowboy town known as Medora and envisioned its vibrant future. Ed recalls Harold saying to him, “There’s too much here to be lost. There’s too much history, too much experience here to disappear.”

Ed says he looked over town from the butte and told his dad, “There’s nothing here!”

As we all know now, Harold was right.

Soon, a statue of Harold and Ed as that young boy will be placed at the site where the two stood that day.

TRMF Entertainment and Attractions Director Kinley Slauter came up with the design to commemorate the spot.

Slauter wanted to create a destination for hikers at the top of the butte that could serve as a stopping place to learn about the history and to get a break from the sun. The structure is intended to look new but also like it’s been there for a hundred years. The wood is rough-hewn in keeping with Harold’s vision for Medora.

“It also provides interpretive information and relates the story of a forty something Harold telling a young Ed about Medora- since declared the start of Harold’s attachment to Medora—the beginning of his legacy,” Slauter said. “In a way we’re saying we know some visitors are more interested in hiking than touring museums so let’s give them a different way to meet Harold and the Schafer Family and tell some of their story. “

The structure on Schafer Point is visible from Medora but blends into its surroundings.

We want to extend our sincere gratitude and a very special thank you to Jim and Joanne Kack whose generosity helped make Schafer Point a reality.



A HISTORIC PARTNERSHIP



*Theodore Roosevelt*TM
MEDORA FOUNDATION

X

THEODORE ROOSEVELT
PRESIDENTIAL LIBRARY



The Theodore Roosevelt Medora Foundation (TRMF) has gifted 3.5 acres to the Theodore Roosevelt Presidential Library Foundation (TRPLF), furthering a special partnership in the Badlands.

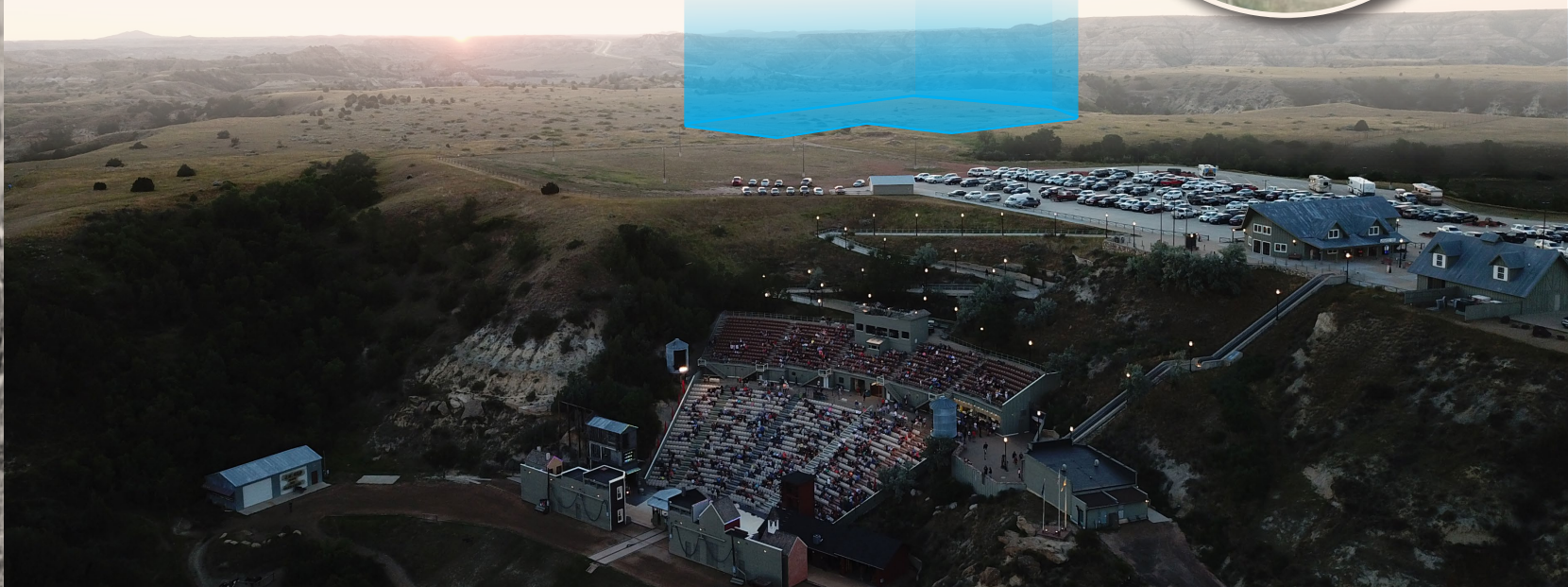
The donated land will be used for shared parking, walking and hiking pathways, and a redesigned passage to both the Burning Hills Amphitheatre and the Theodore Roosevelt Presidential Library.

“The Theodore Roosevelt Medora Foundation and Presidential Library are crucial partners,” said Linda Pancratz, board chair of the Theodore Roosevelt Presidential Library Foundation and also a member of the TRMF board of directors.

“This gift makes clear that our success is shared—for Medora, Billings County, North Dakota, and our nation.”

“The Theodore Roosevelt Medora Foundation believes in the T.R. Presidential Library,” said Tim O’Keefe, chair of TRMF. “The gift of this land is just the start of a mutually beneficial relationship as interdependent neighbors and partners.”

Construction on the Presidential Library is set to begin this year with a grand opening planned for July 4th, 2026 – the 250th anniversary of the United States of America and the Declaration of Independence.



WE BUILT THIS CITY

.....

On every block of every street in Medora, North Dakota, you'll find evidence of passion, purpose, and hard work on behalf of TRMF's amazing volunteers.

Few know this as well as Dick Grosz, who has made the annual trip from Sioux Falls, South Dakota, to volunteer in Medora with his wife Dee since 2005.

"It's good for a person!" Dick said. "We can go back to Medora now and see what we've done—and remember the people we worked with to get it done. That's special."

Dick's elbow grease can be found all over Medora from the wooden boardwalk outside the Rough Riders Hotel to the wood stain on the Schafer family cabin. But the impact of volunteerism in Medora goes far beyond manual labor.

Our 800+ annual volunteers build the community of Medora on the strength of their fellowship.

"It's like coming up for a family reunion, really!" said Viola Wysocki of Grand Forks. "We greet each other just like family."

And in some cases, they literally built a city! In 2001, a group of volunteers constructed the Medora Children's Park in less than five days. And last summer, a team of volunteers and folks from Bravera Bank refreshed the park.

Charles Cullen was there for both occasions. "It's been well used over the years," he said. If the Lord should tarry, it will be here for another twenty-one years!"

From major projects to smaller, often unseen duties, our volunteers carry the spirit of work that would make Teddy Roosevelt and Harold Schafer smile from ear to ear.

We can't thank our volunteers enough for the amazing work they do so selflessly each year in Medora.





FALL FOR MEDORA

HONKY TONK ANGELS & A VERY MERRY BADLANDS CHRISTMAS

We continued to build on our year-round programming with performances of Honky Tonk Angels and A Very Merry Badlands Christmas during the fall and winter of 2022.

Honky Tonk Angels performed 39 times between September 15th and November 6th with close to three thousand people attending.

Honky Tonk Angels is a group based on the music of Dolly Parton, Loretta Lynn, and Tammy Wynette and told the story of three women from three different backgrounds and how they followed their dreams to Nashville.

The cast of A Very Merry Badlands Christmas performed 13 times (two shows were canceled due to the weather) between December 1st and December 18th with over 1,400 people attending.

Medora Musical stars of the past and present brought our guests some of the season's very best music in the charming Old Town Hall Theater with a wonderful story and a dazzling finale that reminded all the reason for the season.

"These shows, combined with our spring series of shows and the well established summer programming like the Medora Musical allowed us to deliver great shows throughout the year." said TRMF Director of Entertainment and Attractions Kinley Slauter.



A LIFETIME OF *Giving*

“No people on earth have more cause to be thankful than ours, and this is said reverently, in no spirit of boastfulness in our own strength, but with gratitude to the Giver of Good who has blessed us with the conditions which have enabled us to achieve so large a measure of well-being and happiness. ”

During a grand celebration and in the company of his most esteemed friends, President Roosevelt opens his inaugural address with these words, 1905. TheodoreRooseveltCenter.org

THE FOLLOWING CONTRIBUTORS REPRESENT ALL CUMULATIVE GIVING TO THE THEODORE ROOSEVELT MEDORA FOUNDATION



IN THE ARENA SOCIETY

\$2,500,000 TO \$4,999,999

Alwin Carus Mineral Trust

Harold (dec.) & Sheila (dec.) Schafer



BULLY SPIRIT SOCIETY

\$1,000,000 TO \$2,499,999

Richard E. & Darlyne Anderson
John (dec.) & Elaine (dec.) Andrist
Anonymous
Joanne & Frank (dec.) Bavendick
Jim & Twylah Blotsky

Mike & Peggy Bullinger
Greg Butler
Matt & JoAnn Butler Foundation
C & J Energy Services
The Engelstad Foundation

Great River Energy
Ron & Marlene Hoffart Family
Frank & JoAndrea (dec.) Larson
William C. & Jane B. Marcil
The Harold & Mary Newman Family



ELKHORN SOCIETY

\$500,000 TO \$999,999

Airwick Industries
Pat (dec.) & Bev Altringer
Jane & Bob Angerer
Arthur & Edith Pearson Foundation
City of Medora
Dickinson Ready Mix Co.
Herman Gierke (dec.)
Gremada Industries, Inc.
Joe & Florence Hauer
Jim & Joanne Kack

Joyce Krabseth
Van & Dee Larson
Arthur & Grace Link
North Dakota Petroleum Foundation
North American Coal
Linda M. Pancratz
George Pasternak
Harold Rase (dec.)
Roosevelt-Custer Regional Council
Roughrider Electric Cooperative

Ed & Nancy Schafer
Dr. Pamela Schafer
Doris Slaaten (dec.)
Tom & Frances Leach Foundation
Touchstone Energy Cooperatives
Erma Wolters (dec.)
Kay York
Michael & Vicki Zaun



THEODORE ROOSEVELT SOCIETY

\$100,000 TO \$499,999

Bill & Sandy Altringer
Claudia B. Anderson
Anonymous
Jim & Lynne Arthaud
Baranko Brothers, Inc.
Rich & Joanne Becker
Rick Berg & Tracy Martin
The Bismarck Tribune
Sandy Boehler
Bravera
Winnifred Brown (dec.)
Norene (dec.) & Art (dec.) Bunker
JoAnn & Matt (dec.) Butler
Bill (dec.) & Pat (dec.) Clairmont
Jay & Carolyn Clemens
Russell & Inez Coenen
John & Hannelore Davis
The Dickinson Press
Doosan Bobcat
Gertrude Eck (dec.)
Bill (dec.) & Marietta (dec.) Ekberg
Orville & Robyn Erlenbush
Fred & Joyce Evans
First State Bank & Trust
First Western Bank & Trust
Forum Communications Printing
Elsie & Leland (dec.) Gilbertson

Larry & Dorothy Goodall
Dr. John & Marian Hamilton
Terry & Kristina Heintz
Ray (dec.) & Gert Hoffman
Ethie & Burton (dec.) Hoovestol
Joanne Hubbard (dec.)
Icon Architectural Group
Nancy Jo Johnson
Norman & Eunice (dec.) Jones
James & Cynthia Jorgenson
Marv & Jane Kaiser Foundation
Dr. Gaylord & Cindy Kavlie
KFYR-TV
Joyce & Bill (dec.) Kingsbury
Harlan Klefstad (dec.)
Knife River - MDU Resources Co
The Lanterman Foundation
Dick & Madrienne J. Larson
Robert Larson (dec.)
Dr. Darin & Tamara Leetun
Reuben (dec.) & Clarice Liechty
Mark & Polly Limond
Doug & Katie Mark
MDU Resources Foundation
Mid Dakota Clinic
Montana-Dakota Utilities Company
Guy & Sandy Moos

Jean Neshiem (dec.)
Nodak Insurance Company, Fargo ND
Tim & Becky O'Keefe
Berniece B. Olson
Prairie Hills Mall
Peder & Barb Rice
Sanford Health
Dr. Lana & Warren Schlecht
Chris & Trina Smaaladen
Michael & Marilyn Smyth
Laura Spolum
Starion Bank
Gretchen & Steve Stenehjelm
Joann & Jack (dec.) Strehlow
Sunderland Family
Mark & Claudia Thompson
Sandy & Rod (dec.) Tjaden
TMI Corporation
Troika Giving
Al (dec.) & Marlys (dec.) Voegele
Rob & Melani Walton Foundation
Wanzek Family Foundation
West Acres Development, LLP
Brad & Deb Wimmer
Wimmer's Diamonds, Fargo
Winn Construction, Inc.
Dr. Dennis Wolf



HAROLD AND SHEILA SCHAFER FOUNDERS SOCIETY

\$25,000 TO \$99,999

Abrasives, Inc.
Bruce & Carolyn Adams
Ardis Afseth
Allete, Inc.
Helene & Richard (dec.) Anderson
Anonymous
Dan & Shelly Armbrust
Randy & Susan Axvig
Rodney & Karen Backman
Baker Boy
BakkenLink Pipeline LLC
Glenn & Jolene Baranko
Marcia (dec.) & Emil (dec.) Baranko
Keith & Kim Becker
Bell Bank
Berger Electric, Inc.
Blair Flegal Estate
BNI Energy
BNSF Railway Foundation
Border Plains Equipment
David & Ruth Borlaug
John V. Boulger
Lucille & Walt (dec.) Braun
DeLayne Brown
Nyle & Arlene Burchill
Adrienne (dec.) & Richard (dec.) Burd
Steve Burian
Capital City Construction, Inc.
Cargill, Inc.
CHI/St Alexius Medical Center
Citizens State Bank at Mohall
Casey & Jessica Clement
Don & Pat Clement
Kelly Clement
Jessie Conrad
Dakota Gasification Company
David Davis
Pat Decker
Carroll L. & Crystal S. Dewing
William (dec.) & Minnie (dec.) Diss
Ray A. Doering
James (dec.) & Mary Domaskin
Duemeland - Stenberg Family
George & Myrtle (dec.) Dynes
Eide Bailly LLP
Duaine & Phyllis Espegard
Doug (dec.) & Helen (dec.) Ferris
First International Bank & Trust
Fisher Industries
Dick (dec.) & Doris Flurer
Paul (dec.) & Bonnie (dec.) Flurer
Brad & Brenda Fong
Joe & Sandi Frenzel
Robert & Joelle Fruh
Bruce & Lorraine Furness
Joel & Jan Gilbertson
Tom & Marge Gunderson
Paul Gurholt
Martha Hansen Estate
Randy & Laurie Hatzenbuhler
Brandy & Guy Hawkins
Donn & Sandra Herron
Heyer Engineering, Inc.
Lowell & Karen Jensen
Mert & Karen Johnsrud

Ralph & Darlene Jose
David & Jennifer Kack
Jeff & Ruth Kack
Steven Kack
Ron & Paulette Keney
Jim & Liz Kertz
Katherine Kilbourne Burgum Trust
Allan Kinnischtzke
Marby Hogen & Loren Kopseng
Bryan A. Kostelecky
Walt Kratz
Karen Krebsbach
Frank (dec.) & Doris (dec.) Kubik
Pam & Lonnie (dec.) Laffen
Mary Larsen
Carolyn & Ron (dec.) Leech
Art Lemke
Gary & Patsy Levang
Maureen Limond
Nick & Bobbi Jo Lonski
Andy & Leanne Magnotto
Randy & Rhonda Mahlum Vaagen
Marathon Oil Company
Lorna & Earl (dec.) Marifjeren
Duey & Char Marthaller
Harley (dec.) & Margaret (dec.) McDowell
Duane & Paula McIntyre
Medora Corporation
Medora Heritage Commission
David & Vivian Meiers
Meyer Broadcasting
Bill (dec.) & Betty Mills
Cheyenne Minick
Concho & Dawn Minick
Hollie & Cody (dec.) Minick
Minnkota Power Cooperative
Minot State University Board of Regents
Brent & Laurel Nelson
Nelson Auto Center GMC
Troy & Kree Nelson
Neset Consulting Service
Mike & Kathy O'Keeffe
Jack (dec.) & Velma (dec.) Olin
Keith & Cathy Peltier
Dorothea & Dr. Geoffrey (dec.) Rath
Ron & Ione Reder
Red Trail Energy
Madge Rieke (dec.)
Ritterbush-Ellig-Hulsing, PC
Don & Diana Roloff
Mike & Shelley Rowe
Joe & Katherine Satrom
Barry & Nancy Schafer
Dianne Schafer
Ellie Schafer
Tom & Jill Schafer
Scheels
Ed & Charlotte Schilke
Dean Schlosser
Jack (dec.) & Joyce (dec.) Schuchart
Elmer & Arlene Schwarz
Chuck (dec.) & Betty Sheldon
Tom & Julie Shorma
John & Nancy Simmons
Cody & Megan Sletten

Michelle Sletten
Rolf Sletten & Emily Walter
Tyler & Sarah Sletten
Bill Sorensen
Steffes LLC
Jan Stowman
Alice (dec.) & Robert (dec.) Stranik
Berk & Kay Strothman
Wayne & Bernice (dec.) Stroup
SuperValu Foundation
Cedric & Mary Theel
The Title Team
Tom & Jean Thomas
Wesley & Bonnie Thomas, Jr.
Bev & Lloyd (dec.) Thompson
Myron & Shirley Thompson
Tooz Construction, Inc.
Jeff & Jan Topp
Greg & Nancy Tschetter
Ned & Diana Twining
United Printing
US Bank
John & Cindy Vallely
Don & Deb Wahus
Martin & Karla Warborg
Clem & Dolores (dec.) Weber
Wells Fargo Bank-Bismarck
Wells Fargo Foundation
Harold Westin
West Plains, Inc
David & Ninetta Westrum
Tammy & Tom Wilhelmi
Timothy Wilhelmi
Jim Wilkinson
David & Gayle Williamson
Dick & Claire Wilson
Lorina Zuern

\$5,000 TO \$24,999

Warren & Rosemary Ackley
AE2S
Bob & Cynthia Albrecht
All American Travel
Fran Allery
American Legion Carl E. Rogen Post #29
American Legion Edgar M. Boyd Post #37
Amvets Post #9 - Bismarck
Earl & Bunny Anderson
Loren Anderson
Sonjia Anderson
Levi & Bethany Andrist
Anonymous
Aspen Group LLP
Associated Land Developers, Lllp
Associated Pool Builders, Inc.
Athwin Foundation
B & K Electric
Babylon Family Investment
Wade & Edie Bachmeier
Orlin (dec.) & Millie (dec.) Backes
Morris Bang
David & Pamela Bangen
Bank of the West - Dickinson
Don & Pam Barsness
Gary & Esther Beazley
BEK Communications Co-op
Myron & Betty Bender
Vonnice Bender
Lowell & Carol Berntson
Bio Master of North Dakota
Bismarck Sertoma Club, Inc.
David & Myrna Blackstead
Blue Cross Blue Shield of North Dakota
Tim & Val Boche
LeRoy (dec.) & Allegra Boeckel
Dr. Timothy & Robin Bopp
Border States Electric Supply
Border States Paving
Ernest (dec.) & Donna (dec.) Borr
Glenn & Julie Bosch
Bosch Lumber Co.
DuWayne Bott
Ronald (dec.) & Orpha Bowman
Robb Boyd
Marlo & Carolyn Brackelsberg
Brady, Martz & Associates, PC
Brandt Hospitality Group
Leo & Maxine Braun
Carol Brenteson
Almit & Marlyne Breuer
Jim & Jolene Brosseau
Mavis & Rodger (dec.) Buchholz
Buffalo Gap Gift Shop
Julie Burgum
Rick & Jody Burgum
Adolph (dec.) & Jorine (dec.) Burkhardt
Butler Machinery Company
Laverne Carley (dec.)
Janet & Al (dec.) Carvell
Lloyd & Ellen Case
Case Electric LLC
Meredith Fuller Casey
Cass Clay Creamery
Jim & Janet Clifford

Cloverdale Foods Company
Coca-Cola Bottling Co.
Cofell's Plumbing & Heating
Community Options, Inc.
ConocoPhillips
Consolidated Telcom
Continental Resources, Inc.
Michele & Halsey Cook
The Coteau Properties Company
Stephen & Carolyn Craig
Crosby American Legion Post #75
CRU
Dacotah Paper Co.
Charles & Karen Dahl
Royce & Marlene Dahl
Dakota Western Bank
Jack & Betsy Dalrymple
Alice & William (dec.) Daniel
Bill & Bonnie Daniel
Gail Daniel
Dan Porter Motors
Shirley & Ray (dec.) David
Patricia Decker
Cordell Dick & Mary Anderson-Dick
Dickinson Eagles Club
Dickinson Elks Lodge #1137
Warren (dec.) & Irene (dec.) Diederich
Direct Travel
Wallace J. Dockter
Dr. John & Janet Doerner
David & Kathy Drovda
Shirley & Richard Dukart
Tim Dwyer Farm Trust
Eastgate/Parkway Funeral Service
Don & Delanis Eckroth
Jim & Charlotte Eddy
Edward Jones - Nick Lonski
Gerald Eid
Randy & Brenda Ekness
Richard & Janet Elkin
Bruce & Donna Ellison
Emmerich Foundation
W. Roger & Colleen Endersbe
Tom & Meikel Engelhardt
Blaine & Carla Engelstad
Bob & Dede Engelstad
Lois & Marv (dec.) Erdmann
Scott & Nancy Erickson
Farden Construction, Inc.
Fargo-Moorhead Area Foundation
Fargo Moorhead Sertoma Club
Ferrellgas
Elizabeth & David (dec.) Fesler
Kathy & Patrick (dec.) Fisher
Flag Family Media
Leland & Linda Fleischer
Mark & Cindy Fliginger
Flint Communications, Inc.
Norma J. Flore (dec.)
Food & Wine Festival
Foresters Buffalo Branch #1552, Jamestown, ND
Dr. Walter & Carolyn Frank
Herman & Carolyn Funk
G.A. Sadowsky & Son, Inc.

Del & Joyce Gab
Ardie Gackle
GA Group, PC
Jeannine Galbreath
Gate City Bank - Fargo
George & Audrey Gaukler
Edward Gaylord (dec.)
Gereld & Marian (dec.) Gerntholz
Roy Gilbreath
Rolf & Mary Gjørven
Mark & Lauren Gjovig
GL Ness Agency
Golf Etc.
Steve (Butch) & Patti Goodall
Gooseneck Implement
David & LaRae Gripenstrog
Dick & Dee Grosz
David Groven
Tom & Janelle Gunderson
Richard & Marilyn Gunsch
Tim Haas
Hal & Kathleen Gershman Family Foundation
Dr. Walter & Margaret Hanewald
Kristi Hanson & Dean Bresciani
Terry & Susan Hanson
Harlow's Bus Service
Chris & Hildi (dec.) Hatzenbuhler
Jordan & Nicole Hatzenbuhler
Irene Haugen
Millie M. Heins (dec.)
Margo J. Helgeson (dec.)
Gary Helgeson
Henry Repeating Arms
Dr. Everett & Carol Heringer
Hess Bakken Investments
Joey & Dean (dec.) Hildebrand
Terry & Katherine Hilstad
Hodges Farms
Senator John & Mikey Hoeven
Jack Jr. (dec.) & Raziye Hoeven
Janet Holt
Ed (dec.) & Lois (dec.) Horning
Gary & Carol Hovdestad
Dave & Marlene Huber
Huck Financial
Humanities of North Dakota
Lt. Col. & Mrs. Nathan Huntington
Charles & Cynthia Huntley
Nancy Husby
IBM
Iggy Weigel Insurance
Innovative Energy Alliance, LLC
Mark & Betsy Jackson
John & Jean (dec.) Jacobsen
JE Dunn Construction
Jenner & Block
Jerome Distributing, Inc.
Dr. Brian & Jane Jespersen
J Greg Smith Advertising, Inc.
JLG Architects
Robert & Donna (dec.) Joersz
Dan Johannes
Colleen Johnson
Debra & Roderick Johnson
Dennis & Vaune Johnson

\$5,000 TO \$24,999 *CONTINUED*

Gloria Johnson
 Joyce (dec.) & Ronald (dec.) Johnson
 Marlene Johnson
 Roger & Mary Johnson
 Scott & Deb Johnson
 Todd & Kathleen Johnson
 Daryl & Katie Jones
 Jordahl Custom Homes
 Walt & Patricia Just
 Andrea Kautz
 Lynette Kautz
 Ray & Darlene Kautzman
 John & Christiane Keaveny
 Rachel & Kenneth Kellogg
 Kelsch, Ruff, Kranda, Nagle & Ludwig
 Ardyth Kenner
 Roger & Jeanette Kenner
 Bruce Kessel
 Edward (dec.) & Toni (dec.) King
 Darlene Kinnischtzke
 Mark & Serina Kinzler
 Kirkwood Mall
 KK Bold
 KLJ Engineering
 Steve & Emily Klym
 Knife River - ND Division
 Stan & Lori Koppinger
 Kovash Furniture, Inc.
 Blake & Brenda Krabseth
 Dalles & Marilyn Krause
 Larry & Margaret Kremers
 Allegra Kretschmar
 Kupper Chevrolet Mandan
 Pauline & Odin (dec.) Kvamme
 Kylo Trucking, Inc.
 Ron & Duska LaCount Family
 Lafarge Dakota, Inc.
 Clinton B. & Ardella Larson
 Fred & Karen (dec.) Larson
 Steven Lebow
 Kyle & Andrea Leftwich
 Leftwich Homes, Inc.
 Larry & Mary Ann Leier
 Lloyd & Gloria (dec.) Liken
 William & Patricia (dec.) Lindell
 Harvey & Gale Link
 Susan & Walter (dec.) Link
 Rev. Muriel J. Lippert (dec.)
 Russell & Joan Lorenz
 Liz C. Love
 Mackoff Kellogg Law Firm
 Jean & Thomas (dec) Madsen
 Magi Touch Carpet One
 Darlene Mahlum & Pierre Haumont (dec.)
 Mainstay Suites of Bismarck
 Lois Malling
 Mary Mann Trust
 David & Mary Muehlen Maring
 Maring Williams Law Office, P.C.
 Jack & Debbie Marquart
 Marshall Fields
 Wayne Mastel
 William & Joan Matthaehi
 Pauline Mayer
 Richard & Julie McCallum
 Carol & William (dec.) McCullough

Bob & JoAnne McPhail
 Medora Convention & Visitors Bureau
 Meridian Oil Inc. through The Burlington
 Northern Resources Foundation
 Metro Area Ambulance Service, Inc.
 Microsoft
 Midco
 Missouri Basin Inc.
 Missouri Valley Petroleum Inc.
 Pat (dec.) & Denis (dec.) Montplaisir
 John & Tashia Morgridge
 Wade & Lynn Moser
 Dr. James (dec.) & Edna (dec.) Moses
 Virginia Mrizek
 James & Donna Muckle
 Mark & Monica Musich
 Roger & Peggy (dec.) Myers
 Myra Foundation
 ND Hoopster
 ND Tourism
 Jim & Christy Neiman
 Neiman Enterprises, Inc.
 Elice Nelson (dec.)
 Tom Netherton (dec.)
 Dr. Kim Tjaden & Dr. Joe Nguyen
 Gene & Connie Nicholas
 David & Alice Nix
 North Country Bank
 Northern Improvement Company
 Northern Plains Distributing, Inc.
 Northland Health Centers
 Northstar Capital
 Northwest Tire, Inc.
 Mary & James (dec.) Norton
 Wes (dec.) & Myra A. Norton
 Odney Advertising Agency
 ONEOK Foundation, Inc.
 Otter Tail Power Company
 Wally (dec.) & Betty Owen
 Jim & Sonja Ozbun
 Kirk & Nancy Pandolfo
 Jack & Kristen Paris
 Robert & Peggy Paul
 Harry & Katherine (dec.) Pearce
 Pearce Durick, PLLC
 Norma & Joe (dec.) Peltier
 LeeRoy & Kris Perry
 Perry Roofing
 Jim Petrik (dec.)
 Petro-Hunt LLC
 Myron & Judy Pfeifle
 Philip Morris Companies, Inc.
 John & Donna Pierce
 John & Dianne Pierson
 Pioneer Mutual Life Insurance Co.
 Plains Ag LLC
 Roger (dec.) Mavis Pommerer
 Prairie Engineering, PC
 Prairie Lumber
 Kent & Kristen Preszler
 Col. Howard & Amy Allen Price
 Darrel & Joanne Quale
 Quality Meats & Seafood
 Railway Credit Union
 Emilie & Brian Rath
 Anna Rathbun

Edith Rau
 Red Rock Ford
 Dr. Henry & Mabel Reichert
 Reid & Associates
 Dennis & Patsy Reinke
 Dr. Justin & Allie Reisenauer
 Renewal by Andersen Corporation
 RES Specialty Pyrotechnics
 Robert & Norma (dec.) Richardson
 Joe & Marlene Ricketts
 Larry & Betty Jo Ridl
 Duane & Joyce Risan
 Wayne (dec.) & Magdalen (dec.) Roberts
 Laurance (dec.) & Mary (dec.) Rockefeller
 Terry & Dona Rockstad
 Robert & Hertha (dec.) Rockwell
 David & Betty Rod
 Rodne Consulting, LLC
 Jim & Sandra Roers
 Larry & Faye Rolfson
 Milton & Bonnie Rolle
 Philippa & P. James (dec.) Roosevelt
 Geri Rotter
 RTC Networks
 Don (dec.) & Evey Russell
 Cathy & Chuck Rydell
 Evelyn Sampson Estate
 Lawrence Sand
 Maynard Sandberg (dec.)
 Phyllis & James (dec.) Sands
 Richard Sather
 Winston & Barb Satran
 Satrom Travel & Tour
 Sax Motor Co.
 Eileen & Steven Scheel
 Virginia & Fred (dec.) Scheel
 Scheels
 Matt & Lori Schettler
 Richard & Dorathy (dec.) Schmidt
 Linda & Willard (dec.) Schnell
 Tom & Maria Schock
 Cheri & Errol Schoenfish
 Harold & Karen Schulz
 The Schwappach Fund
 Sertoma Club of Minot
 Ken M. (dec.) & Jean Siegel
 Nadeane Silbernagel
 William E. Simon Foundation
 Jim & Sandra Simonson
 LaNette Simonton
 Clarence & Jennifer Sitter
 Skeels Electric Co.
 Kinley & Sarah Slauter
 Robbie & Medora Sletten Lauf
 Slope Electric Cooperative
 George P. & Beth Ann Smith
 Richard & Jo Ellen Solberg
 Christian Sorensen
 Jim & Shirley Sorensen
 Southwest Ag Inc
 Ken & Pam Spangler
 LeRoy & Dora Spilde
 Gustav Jr. & Mary Staahl
 StageWest Entertainment, Inc.
 Paul & Laurie Steffes
 Glenn & Vicky Stenehjerm

Leland Stenehjelm Family Foundation
 Walter & Kathy Stieg
 Patty Stokes
 Dennis & Cathy Stromme
 Ron & Peg Stromstad
 James Stuart, Jr. Family Foundation
 Gary & Leora Sukut
 Swenson, Hagen & Co.
 Harley & Margaret Swenson
 DuWayne & Sharon Ternes
 Tesoro
 The True Foundation
 Lloyd & Margaret Thilmony
 Thorsteinson & Sons Construction LLP
 Larry & Jill Tinjum
 Fred & Kathie Tooz
 Bill & Alva Townsend
 Randy & Shelley Traynor
 Trial Runners
 True North Steel
 Jot & Marietta Turner
 Twin City Roofing, LLC
 Union State Bank-Hazen

United Services Life Insurance Company
 USA Managed Care Organization
 US Foods
 Shane & Kimberly Usselman
 US West Foundation
 Vic & Ethelyn Uttke
 Valley Imports
 Gerald VandeWalle
 Michael & Kim Vannett
 VFW Post #1326 - Bismarck
 Dr. Lee & Deanna Vickers
 Vogel Law Firm
 Aletha Vossler
 Maureen Wacker
 Chuck & JoAl Wagner
 Curt & Bev Walth
 Norman (dec.) & Lou (dec.) Weckerly
 Pat & Diane Weir
 Peter & Eileen Welk
 Wells Fargo Bank - Dickinson
 Patrick & Carol Welsh
 Gerald & Karen Wendel
 Weninger Ventures LLC

Western Steel & Plumbing, Inc.
 Clyde & Lois Wetzel
 Whiting Oil & Gas Corp
 Harris & Arlyce Widmer
 Joe & Jenny Wiegand
 Thomas & Virginia Wiggen
 Spencer & Kaye Wilkinson
 M. Elizabeth Wilson (dec.)
 Frank Wood
 Mary Ellen Woodmansee
 Wyoming Casing Service
 XTO Energy
 Patricia Young
 Betty Jo Zachmeier (dec.)
 Ron & Gloria Zeiszler
 Galen & Karla Zerbe
 Lloyd (dec.) & Margaret (dec.) Zeren
 Pearl Zilsdorf (dec.)

ALL OTHER NON-MEMBER GIFTS

4 Bears Casino & Lodge
 The Aarons Company LLC
 Jim & Marlene Aas
 Barbara Abfalter
 Abrasives, Inc.
 Bruce & Carolyn Adams
 Dr. Joseph Adducci
 Adidas Golf
 Christie Allen
 Fran Allery
 Pat (dec.) & Bev Altringer
 Chloe Alvarez
 Alwin Carus Mineral Trust
 Amazon Smile Foundation
 Carol Anderson
 Claudia B. Anderson
 Hazel & Edwin Anderson
 Lauraann Anderson
 Loren Anderson
 Karen Andrews
 Levi & Bethany Andrist
 Anonymous
 Louis & Rosalie Anstandig
 Dan & Shelly Armbrust
 Associated Pool Builders, Inc.
 Randy & Susan Axvig
 Sign Badgers
 Jean Baird
 Baker Boy
 Richard Baltimore
 Baranko Companies
 Elizabeth Barber
 Amy Barglof
 Richard & Brooke Barsness
 Basin Electric Power Cooperative

Cy Bassett
 Joanne Bavendick
 Bavendick Family
 Barbara Beach
 Kendal Beattie
 Judy & Mac Beaudry
 Bill & Cindy Bechtold
 Jace & Kate Beehler
 Donald & Anita Beeks
 Dr. Burton & Patricia Belknap
 Bell Bank
 Alice Bensch
 Rick Berg & Tracy Martin
 R.L. & Marilyn Berg
 Darrell Berger
 Lynn & Denise Billadeau
 Bio Master of North Dakota
 Karla Bitz
 Cheryl & Howard Bjerke
 Blackbaud Giving Fund
 Leon Bladow
 Elizabeth Blair
 Blair Flegal Estate
 Jim & Twylah Blotsky
 Allegra Boeckel
 Sandy Boehler
 Al & Brenda Bollinger
 Boots Bar & Grill
 Border Plains Equipment
 Mel Bosserman
 John V. Boulger
 Marlo & Carolyn Brackelsberg
 Steven & Carol Brimhall
 Kimberly Brinks-Powers
 Judy Broekemeier

Ami Brookens
 Tom & Lizzi Brosseau
 DeLayne Brown
 Jodi & Rick Buchholz
 Mavis Buchholz
 Trevor Buddo
 Tracee S. Buethner
 Mike & Peggy Bullinger
 Steve Burian & Tami Norgard
 Alan Button
 Ron Carmichael
 Jeb & Maureen Clarkson
 Don & Pat Clement
 Jim & Janet Clifford
 Cloud 5 Solutions LLC
 David & Aileen Clough
 Russell & Inez Coenen
 Cofell's Plumbing & Heating
 Columbia
 Joann & Bruce Conroy
 Stephen & Carolyn Craig
 CRU
 Evelyn Dachtler
 Charles & Karen Dahl
 Vern & Gwen Dally
 Dan Porter Motors
 John & Hannelore Davis
 Pat Decker
 Alice Delzer
 Lauri Desir
 Devils Tower Golf Course
 Dean & Robin Dewald
 Carroll L. & Crystal S. Dewing
 Dickinson Parks & Recreation
 The Dickinson Press

ALL OTHER NON-MEMBER GIFTS *CONTINUED*

Mackenzie Dietz
 Ray A. Doering
 Kimberlyn Downs
 Jesse & Peggy Driskill
 Kim Droog
 David & Kathy Drovda
 Shirley & Richard Dukart
 Ecco Shoes
 Annie Edwards
 Eide Bailly LLP
 George & Barbara Eidsness
 Matt Elbert
 Elkhorn Ridge Golf Club
 Blaine & Carla Engelstad
 Patricia & Jeffrey Erickson
 Duaine & Phyllis Espeland
 Fred & Joyce Evans
 Farden Construction, Inc
 Eugene & Elaine Fedorenko
 Joe Fink
 First International Bank & Trust
 Terry Fischer
 Anne Fitch
 Leland & Linda Fleischer
 Floor To Ceiling Carpet One
 Doris Flurer
 Brad & Brenda Fong
 FootJoy
 Debra Forsberg
 Damian Fredrickson & Karla Bitz
 Brian Frenette
 Bruce & Lorraine Furness
 Todd & Denise Gaard
 GA Group, PC
 William & Anna Gannett
 Gate City Bank - Fargo
 David & Karen Gayton
 Medora Bross Geary & John Geary Family
 Fund
 General Steel & Supply Co
 Elsie Gilbertson
 Joel & Jan Gilbertson
 Larry & Dorothy Goodall
 Google Ad Grants
 Great River Energy
 Janine Groseth
 Paul Gurholt & Joyce Robinson
 Robin & Jennifer Haaland
 Tim Haas
 Roger & Leslie Hagemeister
 Steve & Kay Halverson
 Chantel Hamann
 Dr. John & Marian Hamilton
 Annie Hancock
 James & MaryDale Hansen
 Kristi Hanson & Dean Bresciani
 Terry & Susan Hanson
 Keith & Kim Becker
 Scott Harr
 Jerry & Lynn Harris
 Hart Ranch Golf Course
 Barb & Bill Hassing
 Randy & Laurie Hatzenbuehr
 John Haug
 Carrie Haugen
 Lynn & Chad Haverlock

Hawktree Golf Club
 Brandi Hedin
 Darrel & Connie Heins
 Hendrickson Financial Services
 Dr. Everett & Carol Heringer
 Nancy Hermanson
 Dr. Richard Herring
 Hidden Springs Java
 Steven Hilz
 Hodges Farms
 Jesse Hoese
 Ron & Marlene Hoffart Family
 Glenn & Diane Hoffmann
 Peter & Rebecca Hovis
 James Howe
 Tyler & Gina Huck
 Huck Financial
 Lt. Col. & Mrs. Nathan Huntington
 Paulette & Ray Hurd
 John Jacobsen
 Robert & Carol Jacobson
 Susan Janke
 Kim Janssen
 JE Dunn Construction
 Leland & Ruth Jensen
 Jerome Distributing, Inc.
 Bentley Jewison
 JLG Architects
 Gail Johnson
 Laurel Johnson & Gary Lindemann
 Nancy Jo Johnson
 Peggy Johnson
 Philip Johnson
 Roger & Mary Johnson
 Johnson Brothers
 Mert & Karen Johnsrud
 Kent Jones
 Norman & Eunice (dec.) Jones
 Erica Jost
 Tim & Carol Kachel
 Jim & Joanne Kack
 Louise & Erik Kapner
 Andrea Kautz
 Lynette Kautz
 Craig & Lenore Keller
 Tim & Nancy Kelly
 Ron & Paulette Keney
 Keogh Law Office
 Bruce Kessel
 KFYZ-TV
 Tanner & Kali Kiecker
 Barry & Leah Kingsbury
 Joyce Kingsbury
 KK Bold
 Jess Klein
 Wayne & Kelly Klein
 Emily & Steve Klym
 Karen & Gerald Knoell
 Badger Koepplein
 Marby Hogen & Loren Kopseng
 Bryan A. Kostecky
 Ronald & Sheila Kouba
 Joyce Krabseth
 Lyle & Becky Kraft
 Dalles & Marilyn Krause
 Karen Krebsbach

Bruce & Tammy Krings
 Mark & Terri Kroll
 Ron & Duska LaCount
 Sherry Ladd
 Landmark Center
 Clinton B. & Ardella Larson
 Diane Larson
 Dick & Madrienne J. Larson
 Robbie & Medora Sletten Lauf
 Kim Lee
 Leftwich Homes, Inc.
 Larry & Mary Ann Leier
 Levelwear
 Judy Lewis
 Reuben (dec.) & Clarice Liechty
 Lloyd Liken
 Joan-Ellen Lindner
 Keith & Tanya Lingle
 Grace Link
 The Links of North Dakota
 Douglas & Carol Lund
 Robert & Mary Maclean
 Jean Madsen
 MADsports
 Magi Touch Carpet One
 Andy & Leanne Magnotto
 Randy & Rhonda Mahlum Vaagen
 Robert Mankowski
 Marathon Oil Company
 Jenny Marboe
 William C. & Jane B. Marcil
 David & Mary Muehlen Maring
 Doug & Katie Mark
 Jim Marsh
 Marsh McLennan Agency
 Duey & Char Marthaller
 Michael Matteson
 William & Joan Matthaei
 Maui Jim
 Steven Mayer
 Bruce McCollom
 Duane & Paula McIntyre
 Craig & Julie McKay
 Patricia McKlem
 MDU Resources Foundation
 Medora Heritage Commission
 Medora UNCORK'd
 David & Vivian Meiers
 Allen Mench
 Shayna Mertz
 Mid America Steel
 Minot Country Club
 MKL Foundation
 Lindsey Moffitt
 Michael & Mary Moloney
 Jay & Judy Mondry
 Montana-Dakota Utilities Company
 Guy & Sandy Moos
 Moritz Sport & Marine
 Susan Mormann
 Lindsey Mossman
 James & Donna Muckle
 Mark & Monica Musich
 Paul & Lori Myerchin
 North Dakota Petroleum Foundation
 Howard & Dorothy Neils

Jim & Christy Neiman
 Karna Nelson
 Kyle Nelson
 Cece & Tom Newell
 Newman Signs
 Gene & Connie Nicholas
 Nike
 North American Coal
 North Dakota Cowboy Hall of Fame
 Northern Bottling Company
 Northern States Fishing Tools
 Nybeck Golf Inc
 Cora Sue & David Nycklemoe
 Tim & Becky O'Keefe
 Mike & Kathy O'Keefe
 Sean O'Brien
 Kevin & Dara Oliver
 Michael Olsen
 Tom & Sandy Olson
 Kelsey Ost
 Gary Ouellette
 Oxbow Country Club
 Painted Woods Golf Course
 Linda M. Pancratz
 Alex & Angeline Pappas
 Robert Patterson
 Jack & Sandra Pearson
 Karson Pederson
 PEO-Chapter DU
 Daryl Perlman
 Ginny & Jay Perrell
 David & Diane Peterson
 Sheila & Hal Peterson
 Phil's Spray Foam
 Sandi Piatz
 Ping
 Richard Portmann
 Prairie Hills Mall
 Prairie West Golf Course
 Judy Price
 Puma
 Railway Credit Union
 Dorothea Rath
 Emilie & Brian Rath
 Anna Rathbun
 RDO Equipment Co
 Red Rock Ford
 Red Rock Golf Course
 Kathryn Reichert
 Reid & Associates
 Colleen Reinhardt & Steve Heinert
 Peder & Barb Rice
 Darwin & Pauline Roeske
 Maria Roll-Schlecht
 Joe & Carlene Rothschilder
 Geri Rotter
 Mike & Shelley Rowe
 Wayne & Judy Ruzicka
 Ryan Family
 Cathy & Chuck Rydell
 Matt & Emily Sagissor
 San Antonio Genealogical & Historical Society
 Maynard Sandberg
 Winston & Barb Satran
 Greg Sayre
 Ed & Nancy Schafer

Barry & Nancy Schafer
 Marlin Schick
 Robert J. & Eiko I. Schiffman
 Russ & Carol Schmeichel
 Kari Schmidt
 Karen (Susie) & Darrell Schneibel
 Jack & Joyce Schuchart
 Paul & Cindy Schuetzler
 Schumaier Properties LLP
 John Searle
 Ralph & Rita Segal
 Scott Seiler
 Chuck (dec.) & Betty Sheldon
 Tom & Julie Shorma
 Katie Shortall
 Nadeane Silbernagel
 Clarence & Jennifer Sitter
 Tim & Lonna Sjomeling
 Lee Skavanger
 Barbara Slagle
 Kinley & Sarah Slaughter
 Rolf Sletten & Emily Walter
 Karla Smart-Morstad
 Michael & Marilyn Smyth
 Julie Snortland
 Dr. & Mrs. Gary L. Snyder
 Richard & Jo Ellen Solberg
 Bill Sorensen
 Sharon Sorensen
 Rita & Dean Sorlie
 Souris Valley Golf Course
 Southwest Ag Inc
 Renae & Roger Specht
 Carlotta & Terry Spelhaug
 Laura Spolum
 Crystal Stanhope
 Starion Bank
 Gretchen & Steve Stenehjelm
 Stonehome, LLC
 Kim Strehlow
 Dennis & Cathy Stromme
 Sunderland Family
 Sun Mountain
 Michelle Swanson
 Harley & Margaret Swenson
 Jennifer & Joe Sykora
 Deb & Tim Syvertson
 Taylor Made Golf Company, Inc.
 Lynette Terjesen
 Adam & Darla Tescher
 Jake Tescher
 Cedric & Mary Theel
 Theodore Roosevelt Presidential Library
 Foundation
 Mary Thomson
 Tom & Frances Leach Foundation
 Tom & Jean Thomas
 Wesley & Bonnie Thomas, Jr.
 Lisa & Allen Thompson
 Angie Thompson
 Jim & Sherry Thompson
 Maddie Thompson
 Darrick Thorson
 Thrivent
 Bill & Jody Tibert
 Titanium Plumbing

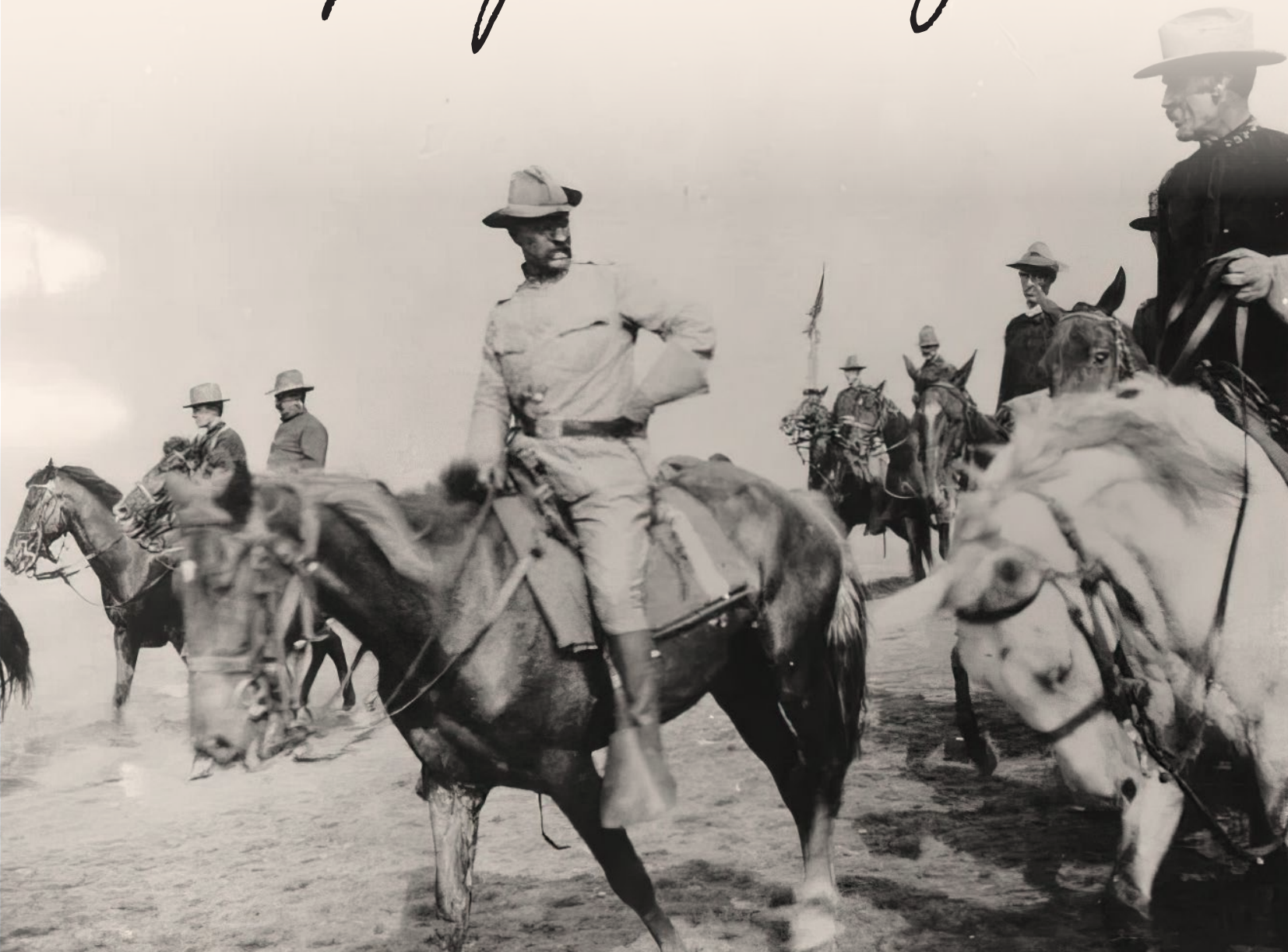
Sandy & Rod (dec.) Tjaden
 Vicky Topping
 Janice & Ron Torkelson
 Travis Mathew
 Greg & Nancy Tschetter
 Twin City Roofing, LLC
 United Printing
 USA Managed Care Organization
 Vic & Ethelyn Uttke
 John & Cindy Vallely
 Rae Ann & James Vandrovec
 Dr. Lee & Deanna Vickers
 Vogel Law Firm
 Scott Vonderheide
 Don & Deb Wahus
 Jody Waldo
 Kaelee & Jackson Wallace
 Robert Watson
 Wave Petroleum Operating/Ion Field Services
 Jon Wede
 Pat & Diane Weir
 Gerald & Karen Wendel
 Weninger Ventures LLC
 Harold Westin
 David & Ninetta Westrum
 Brett & Kim Whitish
 Hans & Lindsay Widicker
 Joe & Jenny Wiegand
 Stephen & Janet Wieser
 Tammy & Tom Wilhelmi
 Spencer & Kaye Wilkinson
 Dick & Claire Wilson
 Winn Construction, Inc.
 Mary Lou Winquest
 Dr. Dennis Wolf
 Michael & Linda Wooters
 Barbara Worth
 Julie Wunderlich
 Joshua Wynne
 Michael & Vicki Zaun
 Regan Zerbe

ROUGH RIDER MEMBERS

Rough Rider membership helps us fix boardwalks and repair historic buildings, buy new American flags, plant flowers, and do hundreds of little things that add up to make a huge difference in Medora.

MEDORA IS WHAT IT IS BECAUSE OF THE
PEOPLE WHO CARE FOR IT.

People like you!



ROUGH RIDER MEMBERS

Gordon & Sharon Aas
 Mary Aasness
 Jarl & Anna Abrahamson
 Paul & Connie Abrahamson
 Mark & Julie Adams
 Dr. Chris & Helen Adducci
 Ardis Afseth
 Fran Allery
 Mike & Sue Altringer
 Alex Alvarez
 Shawn Anagnost
 Carol Anderson
 Curtis & Sharon Anderson
 Claudia Anderson
 David & Susan Anderson
 Gary & Sandra Anderson
 Helene Anderson
 Merton Anderson
 Riley Anderson & Tiahna Anderson
 Craig & Sherry Anderson
 The Anderson Family
 Levi & Bethany Andrist
 Stan Andrist & Jan Nelson
 Barbara & Steve Andrist
 Bill & Shirley Andrus
 Annamae
 Anonymous
 Mike & Jenn Arlien
 Dan & Shelly Armbrust
 Kyle & Jacky Arness Emanuel
 Dr. Richard & Amy Arness
 Tom & Marie Arnold
 Kate & Rob Ash
 Marty & Robin Asay
 The Ashley Family
 Tom & Robyn Atkinson
 Marlys Aubol
 Jeff & Darcy Avery
 Ron & Jeanne Avey
 Charles & Marlene Axtman
 Aaron & Anna Axvig
 Randy & Susan Axvig
 Levi & Rachel Bachmeier
 Rod & Karen Backman
 Carol & Philip Backstrom
 Bruce & Mary Baer
 Roger & Marilyn Baker
 Linda Bakewell
 Jackie Banas
 Dave & Pam Bangen
 Jason & Kristi Barkley
 Barndt Family
 Brice & Noa Barnick
 Ron & Deb Baruth
 Gregg & Vickie Batroot
 Laura & Brandon Beaudoin
 Mac & Judy Beaudry
 Gary & Esther Beazley
 Rod & Roberta Beck
 Jerry & Phyllis Becker
 Richard & Melody Becker
 Jace & Kate Beehler
 Donald & Anita Beeks
 Gerald & Aileen Behm
 Dr. Burton & Patricia Belknap
 Michelle Bell & Jerad Christenson
 Cal & Carla Bender

Dean & Kathy Bender
 Myron & Betty Bender
 Robert & Eleanor Benson
 Duane & Darlene Bentz
 Francie Berg
 Rick Berg & Tracy Martin
 Steve & Dori Berg
 Don & Terry Berge
 Terry & Maria Berglund
 Mike & Mary Lou Bergman
 Don Berntsen & Mary Loyland
 Carol & Lowell Berntson
 Marla & Neal Berntson
 Lynn & Denise Billadeau
 Randy & Elizabeth Bina
 Gene & Dana Bischke
 Joanne Biwer
 Cindy Biwer Bement
 Brian & Karen Bjella
 Keith & Marian Bjerke
 David & Myrna Blackstead
 Donald & Kyle Blada
 Percy & Colleen Blake
 Sandi & Maynard Blohm
 Jim & Twylah Blotsky
 Tim & Val Boche
 Jim & Sharon Boehler
 DuWayne & Donna Boehm
 Barb & Chuck Bokinskie
 Al & Brenda Bollinger
 Mike Bolme
 Lonnie Bonner
 Dr. Timothy & Robin Bopp
 David & Ruth Borlaug
 Steve & Carla Borlaug
 Joel & Cindy Bosch
 Paul & Jackie Bosch
 DuWayne Bott
 Bob & Dawn Boyd
 Marcus & Kirsten Boykin
 Juell & Roger Brabandt
 George & Bondell Brackin
 Brandt Family
 Nancy Brandvik
 Leo & Maxine Braun
 Renee Brekke
 Barbara & Harvey Bren
 Carol Brenteson
 Robert and Jody Briecik
 Jim & Jolene Brosseau
 Terry & Joan Brosseau
 Deanna Brost
 Jane Brown & Patrick Butler
 Dee Brown
 Dan & Peggy Brown
 Mavis J. Buchholz
 Tom & Jude Burau
 Lyle & Madelyn Burchill
 Nyle & Arlene Burchill
 Judy & Ed Burfeind
 Mark Burgad & Karen White
 Doug & Kathryn Burgum
 Julie Burgum
 Rick & Jody Burgum
 Arnold & Sharon Burian
 Steve Burian & Tami Norgard
 Tyler Burian & Calli Wahl

Kathleen Burkhardt
 Glenn & Joan Burkle
 Marv & Linda Butters
 Linda & Alan Butts
 Gordon & Danita Bye
 Brad & Julia Camp
 James & Leatha Campbell
 Don Carey & Laura Garner
 Dallas & Robyn Carlson
 Denise & Kurt Carlson
 Kelly & Mary Ann Carlson
 Marlys Carlson
 Dave & Sue Carlsrud
 Ike & Dawn Carpenter
 Janet Carvell
 Lloyd & Ellen Case
 Robert & Elizabeth Casteel
 Jeff & Debbie Cave & Family
 Jim & Gail Chamley
 Bonnie & John Chepulis
 Suzanne & Harvey Chernoff
 Cathy A. Christensen
 Gary & Edith Christenson
 Al & Jane Christianson
 Jeb & Maureen Clarkson
 Clarence & Radie Clayton
 Sean & Amy Cleary
 Clempro, LLC
 Jim & Rosie Clemenson
 Don & Pat Clement
 David & Aileen Clough
 Russell & Inez Coenen
 Art & Deb Conklin
 Milan & LuAnn Cook
 Rex Cook
 Marvin & Bev Cooley
 The Coteau Properties Company
 Chris & Malinda Cotton
 John & Karen Crandall
 James Cutler
 Mike & Renee Daffinrud
 Royce & Marlene Dahl
 Vern & Gwen Dally
 Jack & Betsy Dalrymple
 Brandon Danford
 Alice Daniel
 Bill & Bonnie Daniel
 Gail Daniel
 James & Heather Davis
 John & Hannelore Davis
 Jessica Davis & Silka Dyett
 Elka Davis Herr
 Jeffrey DeLoss
 Aaron L. Dennis & Valerie D. Wilson
 The Dewald Ranch
 Carroll & Crystal Dewing
 Dickinson Eagles Club
 Dana & Beth Didier
 Janice Dill
 Ken & Diane Dillman
 Billie Dixon
 John Docken & Cathy Lindquist
 Allen & Diane Dockter
 Ray Doering
 Dr. John & Janet Doerner
 Kaye Dolezal
 Dale & Shirley Dolezal

ROUGH RIDER MEMBERS *CONTINUED*

Mary Ann Donnay & Sandy Schob
 Jake & Diane Douts
 Kent & Ramona Dressler
 Joy Dress Neitling
 David & Kathy Drovdal
 Richard & Shirley Dukart
 Cheryl Duke (Sagebrush Inn)
 Daniel & Alisha Duppong
 Pat & Mary Ann Durick
 Kyle & Sherry Ebert
 Don & Delanis Eckroth
 Jared & Annie Edwards
 Ken & Lynne Eggers
 Terry & Carol Egstad
 George & Barbara Eidsness
 Laurie Eisenbeis
 Randy & Brenda Ekness
 Dale & Annette Ekstrom
 Kenneth & Karlene Elfstrum
 Beverly Perhus-Elkin
 Richard & Janet Elkin
 Bruce & Deb Ellertson
 Kay Elvrum
 Dr. Mark & Kim Emmerich
 W. Roger & Colleen Endersbe
 Dale & Mary Engelbrecht
 Blaine & Carla Engelstad
 Donald & Bev Enger
 Rod & Joan Engeseth
 Merlin & Roxi Engum
 Dwight & Elaine Enockson
 Chelsey Erdmann
 Scott & Nancy Erickson
 Bob Eriksen & Sherry Herman
 Orville & Robyn Erlenbush
 Gary & Trudy Ertmann
 Norma E. Eslinger
 Duaine & Phyllis Espegard
 Richard & Karen Espeland
 Troy Evans
 Roger & Addy Evans
 David & Kathy Fagerland
 Daniel & Lynn Falk
 Erllys McCullough Fardal
 Eugene & Elaine Fedorenko
 Bernie & Susan Feland
 Ralph & Naida Feland
 Gearl & Karen Fenster
 Roman & Donna Fettig
 Doug & Susanne Fettig
 Darla & Andy Fimrite
 Judith M. Finck
 Earl & Vi Fink
 Cameron Finseth
 Frank & Marvel Fischer
 Terry Fischer
 Nikki & Bernice Flanagan Memorial
 Bob & Marlene Fleck
 Terry & Kristy Fleck
 Lee & Linda Fleischer
 Doris Flurer
 Ruth Folkestad
 Brad & Brenda Fong
 Carter & Stephanie Fong
 Justin & Renee Forde
 Sherill Fosland
 Victoria & Joe Foster

Jim & Marie Fragodt
 Arlen & Sandy Franchuk
 Dr. Walter & Carolyn Frank
 Fraternal Order of Eagles
 Damian Fredrickson & Karla Bitz
 Joe & Sandi Frenzel
 Donna Fricke & Nadeane Silbernagel
 Froelich Land LP; Mandan, ND
 Bruce & Lorraine Furness
 Del & Joyce Gab
 Dave & Bev Gabbert
 Jeannine Galbreath
 Brian Gale
 Debra Gallagher & Greg Tschider
 Ron & Arlene Gangness
 Bruce & Charlene Gannarelli
 George & Audrey Gaukler
 Bill & Anna Gauslow
 David & Karen Gayton
 Penny & Randy Gengler
 Gerald & Fay Behm
 Tom & Brenna Gerhardt
 Gereld Gerntholz
 Spencer Giddings
 Larry J. Giese
 Gilbertson Farms
 Joel & Jan Gilbertson
 Margaret Gjerstad
 Rolf & Mary Gjorven
 Wayne Gluesing
 David & Mary Goeddertiz
 Larry & Dorothy Goodall
 Steve & Patti Goodall
 Goodleft Family
 Chris Goodman
 Kay Ruth Gorder
 Gornowicz Family; Mike, Brooke, Brandi
 Vernon Gornowicz
 Cynthia & Wally Goulet
 Paul & Marge Gourde
 George & Sandy Graham
 Craig & LaVonne Granholt
 Denise Grantier & Don Bosch
 James & Debra Grasl
 Paul & Deb Gray
 Monte & Deborah Greenup
 Terry & Diane Grenz
 Boni & Gene Griffin
 Ken & Karen Griffith
 Mark & Rhonda Grindy
 Dick & Diana Grosz
 Robert & Gail Gunderson
 Janelle & Tom Gunderson
 L. David Gunkel
 Richard & Marilyn Gunsch
 Glenn & Tracy Gunther
 Peggy Gunther
 Paul Gurholt & Joyce Robinson
 Roger & Deb Guttormson
 Norman & Lori Haagenstad
 Harvey & Vonnice Haakenson
 Rick & Vicki Hack
 Robert Haensel
 Delmer & LaDell Hagen
 Gail Hagerty & Dale Sandstrom
 Dave & Erin Haktol
 Marcus & Daphne Hall

Steve & Carol Hall
 Matthew & Deann Hallaway
 June Haller & Family
 Steve & Kay Halverson
 Gary & Lynne Halvorson
 Steve & Donna Hamar
 DJ & Tanner Hammer
 Roger & Betty Hansen
 Armen & Connie Hanson
 Linda Hanson
 Keith, Kim (Hanson), Anna & Abby Becker
 Don & Jean Hardy
 James & Charlotte Hardy
 Mark & Katherine Hardy
 Robert & Cherie Harms
 Joyce Harnden
 Bill & Barb Hassing
 Arnie & Donna Hatzenbuhler
 Jordan & Nicole Hatzenbuhler
 Randy & Laurie Hatzenbuhler
 Darwin Hauff
 Lorna Haug
 Dale & Karen Haugen
 Loren & Linda Haugen
 George & Mary Haugo
 Chad & Lynn Haverlock
 Kevin & Jackie Hay
 Ike & Teresa Hecker
 Vern & Marilyn Hedland
 Donald & Carolyn Hedlund
 Dale & Jennifer Heglund
 Connie & Dick Heidt
 Kirk & Deb Heim
 Terry & Kristina Heintz
 Leo & Mavis Heinz
 Gary Helgeson
 Arden & Marianne Helland
 Tom & Mary Helland
 Charles & Linda Helmstetler
 Jon & Brenda Hendrickson
 Virginia & Ralph Henning
 Gil & Elna Herbel
 Dr. Everett & Carol Heringer
 Sarah & Doug Herman
 Wendell & Sue Herman
 Mike Herr & Maggie Belle
 Terry & Katherine Hildestad
 Michael & Ann Hilliard
 Helmuth (Doc) Hilz & the late Helen Hilz
 Joyce Hinman Family
 Doug & Pat Hintz
 Kadon & Michelle Hintz
 Ron & Bonnie Hochhalter
 Eileen Hochhalter
 Larry & Beverly Hoffman
 Blaine & Marianne Hoffmann
 Kenneth & Carol Hogue
 Delilah Holdahl
 Wayne, Mike, & Jenny Holden
 Mark & Sandy Holkup
 JT & Maryellen Homan
 Lynn & Twilla Honeyman
 Rolan & Lisa Honeyman
 Richard & Lara Horner
 David & Jill Hovde
 Myron & Marcia Hovet
 Mr. & Mrs. Peter A. Hovis

Carl & Anita Hovland
 Rose & Duane Hovland
 David Groven
 Jerry & Donnel Huber
 Don & Carol Huck
 Jerome & Shirley Huck
 Lt. Col. & Mrs. Nathan Huntington
 Charles & Cynthia Huntley
 Russ & Enid Huotari
 Paul & Kathy Imle
 Erv & Linda Inniger
 Kevin & Donna Isakson
 Kay Iverson
 Betsy & Mark Jackson
 John Jacobsen
 Glenda & Kasey Jacobson
 Lee & Bonnie Jacobson
 Michael & Giosa Jacobson
 Al Jaeger
 Mark & Stephanie Janson
 Ron & Bella Jenkauskai
 Edna & Dennis Jensen
 Leland & Ruth Jensen
 Jack & Hazel Jensen
 Brian & Jane Jespersen
 Cathy Job & Braden Job
 Robert Joersz
 Allan & Sara Johnson
 Brad & Gratia Johnson
 Bruce & Kathy Johnson
 Burdell & Theo Johnson
 Colleen D. Johnson
 Debra & Roderick Johnson
 Dennis & Joan Johnson
 Dennis & Vaune Johnson
 Jodi Johnson
 Bruce & Candace Johnson
 Julie Johnson
 Laurel Johnson & Gary Lindemann
 Laverne Johnson & Gwyn Herman
 Lee C. Johnson & Mary R. Teske
 Mark A. & Shelly Johnson
 Marvin & Geraine Johnson
 Michael J. Johnson
 Nancy Jo Johnson
 Randy Johnson & Marilyn Klein
 Roger & Mary Johnson
 Scott & Deb Johnson
 Shary Johnson
 Nolan & Kelly Johnsrud
 Lynn & Caroline Johnston
 David & Margaret Jones
 Glenn & Betty Jones
 Daryl & Katie Jones
 Jake & Maribeth Joraanstad
 Tom & Arlys Jorda
 James & Cynthia Jorgenson
 Ralph C. & Darlene J. Jose
 JQ Clothing Co
 Lois Juberian
 Walt & Patricia Just
 Jeff & Ruth Kack
 Jim & Joanne Kack
 John & Lou Ann Kaiser
 Marv & Jane Kaiser
 Derek & Rachelle Kane & Family
 Carl & Shell Kannianen

Lynn & Joan Kapaun
 Floyd & Diann Kaul
 Andrea Kautz
 Bonnie Kautz
 Ray & Darlene Kautzman
 Ethel Keeley
 Steve & Gloria Keller
 MarJo Keller
 Kenneth & Rachel Kellogg
 Ron & Paulette Keney
 Roger & Jeanette Kenner
 David & Linda Keup
 Tanner & Kali Kiecker
 Tom & Geri Kiecker
 Barry & Leah Kingsbury
 Allan Kinnischtzke
 David & Bridget Kjorstad
 Lloyd & Glenda Klein
 Lawrence & Rita Klemin
 Cal & Peggy Klewin
 Sully & Linda Kloster
 Larry & Pat Klundt
 Steve & Emily Klym
 Duane & Marlys Knell
 Brent & Marcy Knoell
 Bill A. Knudson
 Linda Knutson
 Mark & Jess Anne Knutson
 Knutson Lawn Service
 Randy & Peggy Koch
 Joan Koenig
 Doug & Bobbie Kohler
 Howard Koppinger
 Stan & Lori Koppinger
 Bryan A. Kostelecky
 Joyce Kotesky
 Al & Evelyn Kovash
 Curtiss & Susan Kovash
 Blake & Brenda Krabseth
 John & Jean Kraft
 Walter Kratz
 Dalles & Marilyn Krause
 Karen Krebsbach
 Todd & Melissa Krehlik
 Kenneth & Sharon Krein
 Peggy (Allen) Krein
 Joe & Arlys Kreitingner
 Larry & Margaret Kremers
 Allegra Kretschmar
 Bruce & Tammy Krings
 Terry & Cathy Kristensen
 Mark & Terri Kroll
 Mitchell & Traese Kuhl
 Dan & Leslie Kunkel
 Curt Kunugi
 Ron & Duska LaCount
 Delvin & Ann LaDuke
 Pam Laffen
 Ron & Amy Lamm
 John & Lina Lamsters
 Rod & Sue Landblom
 Linda Lane & Dennis Hoye
 Mark & Diane Langemo
 Vernon & Rose Laning
 Mary Larsen
 Allen & Kathy Larson
 Bob Larson

Carl & Ellen Larson
 Charles Larson
 Clinton B. & Ardella Larson
 Gary & Laurie Larson
 Larry & Phyllis Larson
 Roger & Pat Larson
 Van & Dee Larson
 Robbie & Medora Sletten Lauf
 Jeff & Deb Lazur
 Alma Lee
 Gary & Joan Lee
 Larry & Margie Lee
 Carolyn Leech
 Jon & Jennifer Leet
 Thor & Loki Leetun
 Larry & Mary Ann Leier
 Blaine & Joyce Lemer
 Art Lemke
 Jim & Deb LeRoy
 Robert (Bob) & Mona-Marie Leslie
 Steve Lester
 Myles & Ellen LeTang
 Nick LeTang
 Sandy & Cliff Levorsen
 Cari & Bill Liebel
 Clarice Liechty
 Rob & Lori Lighthizer
 Lloyd T. Liken
 William Lindell
 Ted & Frances Lindseth
 Keith Lingle & Tanya Wrigley-Lingle
 Donald & Phyllis Link
 Gale & Harvey Link
 Jamie & Heather Livingston
 Bryan & Julie Loff
 Robert Loken
 Nick & Bobbi Jo Lonski
 Loren Luckow
 Brian & Bonnie Lund
 Dr. Dennis & Meryl Lutz
 Jean M. Madsen
 Lois & Fred Madsen
 Darlene Mahlum
 Randy & Rhonda Mahlum-Vaagen
 Landa E. Manders
 Mando's Concrete
 John & Jackie Mann Ramirez
 Brook Manske
 Michael & Debby Marback
 Dave & Mary Maring
 Jack & Debbie Marquart
 Duey & Char Marthaller
 Corey & Dara Marthaller
 Ryan & Melissa Marthaller
 Bill & Marilyn Martinson
 Jerry & Jerry Mathistad
 Bill & Joan Matthaai
 Dan & Kathy Mayer
 Bob McCallum
 Metta McDowell
 Duane & Paula McIntyre
 Craig & Julie McKay
 Kevin & Beth McLouth
 Rick & Rosalie Medalen
 Barry & Karen Medd
 Medora C Store
 Cody & Lisa Meduna

ROUGH RIDER MEMBERS *CONTINUED*

Glen & Stephanie Meier
 Jim & Ronda Mellon
 Gerald & Hattie Melvin
 Cal & Lois Messersmith
 David D. & Nila Meuchel
 Cathy Meyer
 John & J J Meyer
 Mitch & Gentry Meyer
 Sara Michael
 Elaine Miedema
 Brad & Kathy Miller
 Tom & Donna Miller
 Michael M. Miller
 Robert & Joleen Miller
 Russell & Linda Miller
 Tammy Miller & Craig Palmer
 George & Cheryl Mizell
 Paul & Bonnie Mohagen
 Keith & Sharon Monilaws
 Dean & Carol Monson
 George & Joy Monzingo
 Guy & Sandy Moos
 Greg & MaryAnn Morford
 Dennis & Eileen Morris
 Katynka & Joe Morrisette
 Peter & Kristi Mounts
 Elphege Mrozek
 Jim & Donna Muckle
 Robert & Mary Muhs
 Curtiss Mundahl
 Mark & Monica Musich
 Wayne & Judy Muth
 Calvin & Ronna Myers
 Bill & Sue Nathe
 Bonita & Robert Neas
 Karen & Phil Neidhardt
 Rita Neigum
 Carol M. Nelson
 Dana Nelson & Brent Schroeder
 Dean & Lore Nelson
 Don & Char Nelson
 Donald & Rena Nelson
 Kit & Jackie Nelson
 Dr. Jim & Lorri Nelson
 Leonard & Mariea Nelson
 Neset Consulting Service
 Kathleen Neset
 Leo & Kari Ness
 Loren & Jan Ness
 Tom & Cece Newell
 Jeff & Carla Newman
 Al & Bev Nielsen
 Darrell & Carol Nitschke
 Jack & Helen Noble
 NoDak Kid
 George & Kayleen Nodland
 Wade & Bonnie Northrop
 Myra Norton
 David Nygaard
 Bill & Heather O'Keefe
 Tom & Bonnie Odegaard
 Sally and James Odenbach
 James & Leona Odermann
 Emma Olsen
 Berniece B. Olson & Family
 Dale & Corlene Olson

Gerald & Ardys Olson
 Lori & Jim Olson
 Courtney & Tim Olson
 Leon & Lujane Opdahl
 Jerry & Mary Beth Orn
 Clifford & Valeria Orr
 Darron & Barb Orr
 Linda & Gelaine Orvik
 Dori J. Ost
 Garry & Wanda Ottmar
 Steve & Linda Ough
 Michael & Denise Ouren
 Greg & Danika Owen
 Jim & Sonja Ozbun
 Dan & Judy Paintner
 Kirk & Nancy Pandolfo
 Jack & Kristen Paris
 Allen & Avis Pedersen
 Karson Pederson
 Neal & Sherry Pederson
 Keith & Cathy Peltier
 Norma K. Peltier
 Clive Pelton
 Earl & Darlene Pelton
 Howard & Ila Perhus
 Kris & LeeRoy Perry
 Josh & Jamie Peshek
 Curtis & Susan Peterson
 Don & Julie Peterson
 James K & Charlyn M. Peterson
 Len & Marcia Peterson
 Hal & Sheila Peterson
 Myron & Judy Pfeifle
 John & Rosalie Long
 John & Donna Pierce
 Dr. Troy & Kellie Pierce
 Rob Pierson & Jessie Beehler
 Betty Pikop & John Jensen
 Mavis Pommerer
 Pam Posster
 Darlene & Allen Praus
 Einar & Sonja Prestangen
 John Presteng
 Colleen Dorgan Preszler
 Dale & Kristi Preszler
 Dan & Karen Preszler
 Kent & Kristen Preszler
 Ken & Cheryl Purdy
 Darrel & Joanne Quale
 JQ Clothing Co
 Sheryl Ramstad
 Kimmy Rappenecker
 Wynn & Donette Rasmussen
 Andrew Rath
 Delores Rath & Chase Rath
 Dorothea Rath & Family
 Terry & Sandy Rath
 Anna Rathbun
 Lou & Jerrie Ratto
 Wayne & Gloria Rau
 Ina Raumin
 Ron & Laurie Rauschenberger
 Ron & Ione Reder
 Dean & Rhonda Reese
 Dr. Henry & Mabel Reichert
 Tom & Pam Reichert

Elvera Reindel
 Colleen Reinhardt & Steve Heinert
 Dennis & Patsy Reinke
 Janet M. Reller
 Dr. & Mrs. Gary L. Remier
 Earl & Lois Rennerfeldt
 Jerome & Linda Retterath
 Edward Retzer
 Wayne & Elaine Retzlaff
 John & Diane Jamison-Richards
 Doug & Kristy Richards
 Bob Richardson
 Jan & Sandy Rieger
 Mike & Helen Risan
 Gary & Pat Ritter
 Brian & Lisa Roach
 Gordon & Mary Robson
 David & Betty Rod
 Darwin & Pauline Roeske
 Carol A. Rogne
 Russell & Marsha Rogne
 Larry & Faye Rolfson
 JoLynn & LeeRoy Roller
 Don & Diana Roloff
 Larry & Myrna Romine
 Bea & Mel Roth
 Joe & Carlene Rothschilder
 Michael & Shelley Rowe
 Kurt & Amber Ruzicka
 Wayne & Judy Ruzicka
 Bill & Kerry Ryan
 Chuck & Cathy Rydell
 Curt & Michelle Saari
 LaVonne Sadowsky
 Roger & Norene Sandberg
 Victoria Sandberg
 Phyllis Sands
 Terry & Laura Sarkilahti
 Dr. Jeffrey & Mary Sather
 Winston & Barb Satran
 Galen & Jo Satrom
 Fred & Kristy Sauby
 Terry & Marsha Sauer
 Keith & Joanne Saville
 Dianne Schafer
 Pamela R. Schafer, MD
 Rodney & Andrea Schafer
 Cattera Schafer & Danna Schaffer
 Amiel & Connie Schaff
 Frank & Paulette Schaff
 Ed & Betty Schall
 Henry Schank
 Jon Schardin
 John B. & Gayla Schatz
 Suzie Schatz Hills
 Tom & Dianne Schemper
 Bob & Eiko Schiffman
 Gregg Schildberger & Kayla Muehler
 Ed & Charlotte Schille
 Dr. Keith & Karen Schindler
 Warren & Lana Schlecht
 Russ & Carol Schmeichel
 Sharon Schmidt
 Michael & Janel Schmitz
 Rich & Sue Schneider, J&J Guide Service,
 Living the Dream Outdoors, LLC

Larry & Judi Schnell
 Linda Schnell
 Cheri & Errol Schoenfish
 Cynthia Schreiber-Beck
 Fred & Dorothy Schroeder
 Nettie & Sarge Schuler
 Lori Schulte
 Harold & Karen Schulz
 Caroline Schwartz
 Elmer & Arlene Schwarz
 Bishop Craig & Wendy Schweitzer
 Scott & Robbin Schwindt
 Parker & Lezlie Scott
 Chris, Tracy, Lucy & Aksel Seeve
 Susan Sehnert Stuart (1972 Burning Hills Singer)
 JeAnne Selby
 Dave & Judith Senne
 Gary & Phyllis Sethre
 Monsignor James Shea
 Chuck (dec.) & Betty Sheldon
 Anna Marie Shomento
 Randy & Diane Sickler
 Ken (dec.) & Jean Siegel
 Kenny R. Siegel
 Sandy Siemers
 Marvin & Janice Sigman
 Queen Taija
 Bob & Carol Simmers
 LaNette Simonton
 Ken & Vickie Sims
 Steven & Deborah Sing
 Clarence & Jennifer Sitter
 Arnie Skachenko & Georgie Beckert
 Scott, Angela, Maycee, & Lailoni Skones
 Donna & Sydney Slais
 Kinley & Sarah Slaughter
 Cody & Megan Sletten
 Tyler & Sarah Sletten
 Harriet Smedshammer
 Gene & Noreen Smestad
 Irvin & Marsha Smith
 Mike & Marilyn Smyth
 Steve & Jane Snyder
 Richard & Jo Ellen Solberg
 Clark & Bonita Sonderby
 Shirley & Jim Sorensen
 Gary & Martha Sorenson
 Dean & Rita Sorlie
 Ragene Sovak
 Pam & Ken Spangler
 Renae & Roger Specht
 Carlotta & Terry Spelhaug
 Bob & Karen Sprynczynatyk
 Gustav & Mary Staahl
 Russ & Shirley Staiger
 Mike & Cindy Stark
 State Bank & Trust of Kenmare
 Don & Linda Staudinger
 William & Lucetta Steele
 Dennis & Teresa Steinman
 Beth Bakke Stenehjem
 In Memory of Wayne Stenehjem
 Steve & Gretchen Stenehjem
 Bob & Mavis Stevens
 Lori Sticka

Walter & Kathy Stieg
 Patty Stokes
 Wally & Diane Stommes
 Diane Strehlow
 Kim Strehlow
 Dennis Streitz Family
 Jon & Sandi Strinden
 Thomas & Michelle Strinden
 Dennis & Cathy Stromme
 John & Yvonne Suess
 Gary & Leora Sukut
 Marlene Summers
 Dustin & Jettie Swanson
 Dr. William & Nancy Swanson
 Gary & Amy Swenson
 Harley & Margaret Swenson
 Lexie & Jeremiah Swenson
 Mark & Stephanie Swenson
 Paula & Dean Swenson
 Joe & Jennifer Sykora
 Tim & Deb Syvertson
 Tim & Teri Taylor
 Tom Hopfauf/TRS, Inc.
 Adam & Darla Tescher
 Scott & Jodi Tewksbury
 Cedric & Mary Theel
 Lloyd & Margaret Thilmony
 Tom & Jean Thomas
 Bonnie & Wesley J. Thomas, Jr.
 Allen & Lisa Thompson
 Deborah Lou Thompson
 Duane & Mary Thompson
 Mark & Claudia Thompson
 Myron & Shirley Thompson
 Betty Thune
 Andrew & Rhonda Tibert
 Bill & Jody Tibert
 Rick & Kim (Dennis) Timmers
 Larry & Jill Tinjum
 Lee & Lashell Tjelde
 Paul & Debbie Todhunter
 Mark & Peggy Tollefson
 Fred & Kathie Tooz
 Jeff & Jan Topp
 Ron & Jan Torkelson
 Willard & Luane Tormaschy
 Bill & Alva Townsend
 Andrea Travnicek
 Daniel & Patricia Traynor
 Randy & Shelley Traynor
 Bruce & Kathy Trusty
 Bill & Laurel Tveit
 Angela Uhlich, Cathy Janikowski
 Vic & Ethelyn Uttke
 John & Cindy Vallely
 Darrell & Kathy Vanderbusch
 Jim & Rae Ann Vandrovec
 Mary & Gene Van Eeckhout
 Carl & Roberta Vender
 The Verost Family
 Deanna & Lee Vickers
 Claire & Jill Vigasaa
 Dan & Connie Vigasaa
 Shawneen Voiles
 Dean & Dora Volesky
 Walt & Judy Vollmers

Aletha Vossler
 Chad & Stacy Wachter
 Kathleen Wachter
 Maureen Wacker
 Chuck & JoAl Wagner
 Donavon & Pam Wagner
 Jim & Sally Wagner
 Don & Deb Wahus
 Gary & Rosie Walker
 Loretta Wall
 Kaelee & Jackson Wallace
 Dean Walsh Angie Walsh
 David Walsvik & Jennifer Goeke
 Curt & Bev Ann Walth
 Mike & Karen Walton
 Clint & Cheri Wanek
 Donna Wanzek
 Martin & Karla Warborg
 Doug & Diana Watterud
 Danielle & Todd Watterud
 Bruce & Rhonda Weeda
 Thomas Weigel
 Gary Weinberger
 Jerry & Mary Weinreis
 John & Susan Weiss
 Liz Weiss
 Janet Well
 Gerald & Karen Wendel
 Loren & Barbara Wentz
 Lee & Carla Werner
 Bobbie Westbee
 Les & Pat Westgard
 Loran Westin
 Greg & Janet Westlind
 David & Ninetta Westrum
 Kim & Brett Whitish
 Hans & Lindsay Widicker Family
 Gary & Kathleen Widicker
 Harris & Arlyce Widmer
 Scott & Debra Wiest
 Tom & Ginny Wiggen
 Terry & Marcia Wilber
 Jim & Barbara Williams
 David & Gayle Williamson
 Dick & Claire Wilson
 Gordon & Bonnie Winzenburg
 Clint & Ann Wold
 Gary & Susan Wold
 David & Eunice Wolf
 Dennis E. Wolf, MD
 Curt & Jane Wollan
 Larry & Pat Wood
 Ron & Vi Wysocki
 Nick & Lindsey Ybarra
 Kay York
 Merle Zander
 Michael & Vicki Zaun
 Lorri & John Zenz
 Galen & Karla Zerbe
 Twila & Mark Zidon
 Mona & Ken Ziegler
 Bernie Zinda & Jean Zinda
 Don & Sharon Zubke
 Rodger & Mary Zurcher

JR. ROUGH RIDER MEMBERS

The Junior Rough Rider program connects kids 17 and under to extra special Medora experiences, includes gifts, newsletters, messages, activities, and more!



JR. ROUGH RIDER MEMBERS

Theo Abrahamson
Leighton Anderson
Allison Avey
Jack Avey
Felix Andrea Axvig
Kaylee Bahls
Echo Juliatt Barner
Britta Beaudoin
Finn Beehler
Isabelle Joyce Billadeau
Berklee Black
Brita Black
Cambria Black
Elliot Boston
Olive Boston
Cohen Boykin
Ramsey Boykin
Skylar Boykin
Summit Boykin

Emma Braun
Sophee Briese
Gwennie Burchill
Forrest North Cao
Lily Dakota Cao
Beckett Carlson
Audrey Cleary
Kade Clement
Taylor Clement
Benjamin Deisz
Madison Deisz
Charleigh Delahoyde
Graham Delahoyde
Holden Delahoyde
Aspyn Dewing
Brooks Dewing
Weston Dewing
Avriana Doan
Jamisyn Doan

Jaxton Doan
Jayston Doan
Jordy Doan
Tenlee Doan
Bridger Doering
Eddie Doering
Emmy Doering
Tomi Doering
Ty Doering
Hadrian Lee Dorsher
Cayla Duke
Archer Robert Dulitz
Henry Fletcher Dulitz
Hudson Duppong
Lily Edwards
Hannah Edwards
Charles Eidsness
Maddie Eidsness
George Farris

JR. ROUGH RIDER MEMBERS

Luke Farris
 Kaleb Faul
 Kinzley Faul
 Cayson Feininger
 Rowan B. Fleischer Daugherty
 Karter Forbes
 Quinn Forbes
 Hayden Forde
 Hudson Forde
 Addie Forster
 Owen Forster
 Lincoln Fremont
 Porter F. Fremont
 Logan Garrett
 Caroline Gilligan
 Joseph Gilligan
 Liam Gjorven
 Sarah Gjorven
 Lily Glazener
 Sollie Glazener
 Grace Hagens
 Hudson Hagens
 Evan Haislet
 Harvey Haislet
 Gracie Harviell
 Maxwell Hatzenbuhler
 Reagan Hatzenbuhler
 Anna Heintz
 Geof Heinz
 Ada Jane Herman
 Caroline Herman
 Gage Birdsall Herman
 Henry Herman
 Delilah Hey
 Myles Hey
 James Hogan
 Dawson Huck
 Reese Huck
 Joshua M. Huovinen
 Herlof Huso
 Braelynn Irish
 Hatlee Irish
 Kasey Jacobson
 Kaylee Jahner
 Remi Jahner
 Wayne Jahner
 Alina Johnson
 Mariah Johnson
 Amos Joraanstad
 Addison Jorde
 Payton Jorde
 Scarlett Jorde
 Charles Kaiser
 Ada Jade Kath
 Brooke Kiecker
 Emmy Kiecker
 Jozie Kiecker
 Megan Kiecker
 Bria Kilwein
 Carter Klym
 Conner Klym
 Hannah Klym
 Beckett Kolling
 Kenna Kolling
 Bernadette Krohm
 Sigrid Krohm
 Theodore Krohm

Atley Kuhn
 Esley Kuhn
 Lena Kunkel
 Greta Larson
 Logan Larson
 Megan Larson
 Teaghan Lengowski
 Brayden Lewis
 Bridget Liebel
 Mason Liebel
 Mary Martens
 Grant Marthaller
 Laeni Marthaller
 Colton Mason
 Ruby Lynn Mason
 Weston Mason
 Kassidie McCullough
 Keltie McCullough
 Kenadie McCullough
 Thatcher McCullough
 Kit Meyer
 Sarah Musser
 William Musser
 Korbin Myers
 Nissa Myers
 Kae Nelson
 Cason Neset
 Luke Neset
 Mia Neset
 Bailey Ness
 Bella Ness
 Brayden Ness
 Elsie Ness
 Marla Ness
 Everly Nichols
 Owen Nichols
 Aubrey Northrop
 Madison Northrop
 Emilia Novotny
 Evelyn Novotny
 Calvin Olheiser
 Hadley Olheiser
 Medora Olson
 Julian Tomas Ortiz
 Jack Patterson
 Ezra Pedack
 Charlotte Peterson
 Avery Pfennig
 Lainey Pfennig
 Andrew Piela
 Elliot Piela
 Julien Piela
 Addisyn Pikop
 Josie Raden
 Lucie Raden
 Walter Raden
 Espen Ratcliffe-Cox
 Nevaeh Ratcliffe-Cox
 Watson Ratcliffe-Cox
 Aubrey Rau
 Emmitt Rau
 Kamryn Rausch
 Dally Rehbein
 Dillon Theodore Reitan
 Adriann Reuschlein
 Hank Richards
 Lilly Richards

Kenleigh Rudolph
 Khloe Rudolph
 Eli Schmidt
 Karson Schmidt
 Jayden Shinn
 Zander Shinn
 Sofee Siroshon
 David Sitter
 Emily Sitter
 Kaitlyn Sitter
 Laura Sitter
 Megan Sitter
 Aleah Slauter
 Anton Slauter
 Ava Slauter
 Amelia Sovak
 Oliver Sovak
 Petra Sovak
 Wayne Stark
 Jake Streitz
 Liam Sullivan
 Louise Sullivan
 Elsa Swanson
 Freya Swanson
 Jack Swanson
 Jaylen Swanson
 Jett Swanson
 Justina Swanson
 Kenny Swanson
 Ben Swenson
 Clara Swenson
 Lainey Swenson
 Maggie Swenson
 Max Swenson
 Millie Swenson
 Owen Swenson
 Teddy Swenson
 Colson Tescher
 Kason Tescher
 Kya Tescher
 Maxton Tescher
 Wesley J. Thomas, IV
 Carly Tormaschy
 Jackson Tormaschy
 Elizabeth VanSteenvoort
 Jeremy VanSteenvoort
 Mavis VanSteenvoort
 Quaid Walter
 Rokton Walter
 Zahara Wandler
 Brody Watterud
 Hunter Watterud
 Kaison Watterud
 Rayce Watterud
 Cooper Widicker
 Jillian Widicker
 Wyatt Widicker
 Olivia Wiest
 Kennedy Wiesz
 Tucker Wiesz
 Kiernen Williams
 Rhett Wimmer
 Quinn Yeager
 Teagan Yeager
 Tristan James Zastrow
 Aaliyah McDaniel Zins
 Ava Zins

BUSINESS MEMBERS

Your support helps us accomplish our mission: to preserve the history of Medora, present it to the traveling public, and serve everyone who steps foot in this wonderful town.



BUSINESS MEMBERS

4 Bears Casino & Lodge
5 Star Ranch-Randy & Suann Olson
Dr. Duncan B. Ackerman
Advanced Collision Center, Inc.
AE2S, LLC
Aesthetic Center of Plastic Surgery
Agri Insurance - Beach, ND
All American Travel
Allied Appraisals of ND, Inc.
The American Legion Carl E. Rogen Post 29
American Legion Edgar M. Boyd Post 37
The Arthur Companies
Aspen Group, LLP
Aspire Credit Union
Associated Land Development, LLLP
Badlands Dental
Badlands Eye Clinic
Badlands Truck Sales
Baker Boy
Baranko Companies
Belfield Automotive Supply

Berg Group/Alliance Property Mgmt
Berger Electric, Inc.
Bismarck Motor Company
Bismarck Sign Co.
Blue 42 Sports Grille & Bar
BNC National Bank
Border Plains Equipment
Border States
Bosch Lumber Co.
BOSS Office Products
Brady, Martz & Associates, P.C.
Braun Intertec Corporation
Buffalo Gap Gift Shop
Bully Spirit Consulting
Butler Machinery Company
Capital City Construction, Inc.
Kent & Jodi Carlson
Casselton Lumber
Charley Montana Boutique
CHI St. Alexius Health Dickinson
Choice Bank

Christianson Companies
Community Options, Inc.
ConocoPhillips
Consolidated Telcom
Continental Real Estate, Inc.
Country Road Arabians
Creedence Energy Services
Creek Oilfield Services, LLC
Crosby American Legion Post #75
CWSTRUCTURAL Engineers
Dacotah Bank
Dacotah Paper Co.
Dakota Community Bank & Trust
Dakota Foot & Ankle Clinic
Dakota Insurance Agency
DMVW Railroad
Dakota Specialty Milling Co.
Dakota Supply Group
Dakota Western Bank
Dan Porter Toyota Honda
Dickinson Renewable Diesel Facility

BUSINESS MEMBERS

Dickinson State University (courtesy Of Steve & Marivern Easton)	KLJ Engineering	Pure Skin Aesthetic & Laser Center
Doosan Bobcat Company	Knife River - ND Division	Quality Quick Print, Inc.
Dvorak Motors	Kovash Furniture, Inc.	Queen City Abstract, Title & Escrow
Eastgate/Parkway Funeral Service	Blake Krabseth, Comedian/Magician	Railway Credit Union
Edward H. Schwartz Construction, Inc.	Kyllo Trucking, Inc.	RDO Equipment
Edward Jones - Nathan Dvorak	Larsen Service Drug	RE/MAX Integrity Realty - Lorrie Nantt
Edward Jones - Marlene Bradbury	Jon Leet - 1st International Bank & Trust	RE/MAX Integrity Realty - Ninetta Wandler
Edward Jones - Nick Lonski	Leftwich Homes, Inc. - Kyle Leftwich	Red Rock Ford of Dickinson
Eide Bailly, LLP	Gary & Patsy Levang Farm	Riverwood RV
Tim Eissinger	Liberty Business Systems, Inc.	Dean & Debbie Rodne
Enerplus Resources	Lignite Energy Council	Roers Construction
Expressway Suites Of Bismarck	Little Missouri Saloon/AmericInn	RTC Networks
Farm Credit Services of Mandan	Magi Touch Carpet One	Rud Oil & Gas - Center
Farmers & Merchants Bank of ND	Marathon Oil Corporation	Sage Point
Marianne & Albert Figen Foundation	Maring Williams Law Office, P.C.	Joe & Katherine Satrom
Fireside Office Solutions	Marsh McLennan Agency	Sax Motor Co.
First International Bank & Trust	Mayer Insurance	Schafer Ranch
First State Bank of Golva	Meyers Department Store	Scheels
First Western Bank & Trust	ND Hoopster	Schmitz-Holmstrom CPA
Floor To Ceiling Carpet One	ND Petroleum Foundation	Schwan Buick GMC Cadillac, Inc.
Fritel Enterprises, Inc.	Neiman Enterprises, Inc.	Scott Karsky State Farm Insurance
GA Group, PC	Neset Consulting Service	Scuba Steve Well Service
Gate City Bank	Newby's Ace Hardware	Sea Foam International, Inc.
Glendive BN Federal Credit Union	Gene & Connie Nicholas	Rolf Sletten & Emily Walter - Veridoc
Glendive Medical Center	NISC	Slope Electric Cooperative, Inc.
Golf Etc. Bismarck	Nodak Mutual Insurance Company	Southwest Ag, Inc.
Golva Grocery	Nodak Insurance Company, Clare Messmer, Agent	Spiffy Biffs
Gooseneck Implement	North Dakota Cowboy Hall of Fame	Starion Bank
Great Plains Technical Services	North Dakota Newspaper Association	Heather Stromme, Century 21 Morrison Realty
Haga Kommer, Ltd.	North Dakota Ready Mix & Concrete Products Association	Sunderland Group
Brandt Haskell - Ridgeline Taxidermy	Northern Bottling Company	SYSCO North Dakota
Karin Haskell, REALTOR® Better Homes and Gardens Real Estate Alliance Group	Northern Improvement Company	Theodore Roosevelt Presidential Library
Hatlee & Brae Ice Cream & Coffee Shop, Bread & Butter Sandwiches & Sodas	Northland Health Centers	The Title Team
Heritage Exteriors By Brandon Leingang	North River IT Services Co.	Thorsteinson & Sons Construction, LLP
Hodges Farms	Northwest Realty/Jim Christianson	Tires Plus
Hoggarth Wheat	Northwest Tire, Inc.	Trapper's Kettle
Home and Land Company	Nova Fire Protection	Triangle Electric, Inc.
Huck Financial	Opp Construction	Twin City Roofing, LLC
Iggy Weigel Insurance	Paramount Builders, Inc.	Medora UNCORK'd
Infinity Real Estate Group, LLC	Paramount Real Estate	Union State Bank- Hazen
Gene & Sue Jackson, Inc.	Pearce Durick, PLLC	Vogel Law Firm
JE Dunn Construction	Perry Roofing & Contracting	Allen & Becky Walth
Jensen Travel	Petro-Hunt, LLC	Weninger Ventures, LLC - New Town, ND
Jerome Distributing, Inc.	Plains Ag, LLC	Western Products
Allan Jirges & Linda Fisher	Planningteam Financial Advisors	West River Health Services
JLG Architects	Prairie Engineering, PC	White Owl Ranch
Kelsch, Ruff, Kranda, Nagle & Ludwig Attorneys at Law	Prairie Lumber, Inc.	White Owl Ranch SW32
Keystone Wealth Partners	Prairie View Landscaping	Wiegand's Victory Enterprises
KK Bold	Pro Tech Diesel	Wimmer's Diamonds
	Proximal50 Life Center	Winn Construction, Inc.
	Puklich Chevrolet	WSB

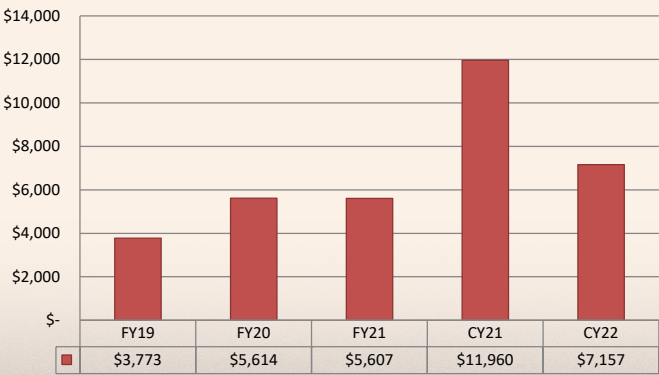
2022 FINANCIALS

REVENUE PIE CHART

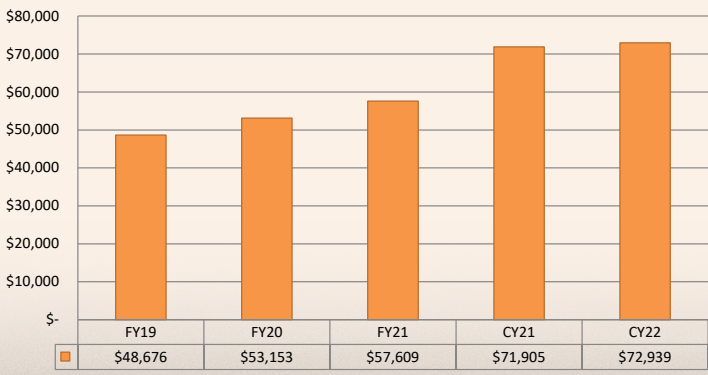


DEVELOPMENT REPORT

Contributions
(In thousands)



Net Assets
(In thousands)



ENDOWMENT SUMMARY

ENDOWMENT OPPORTUNITIES

16

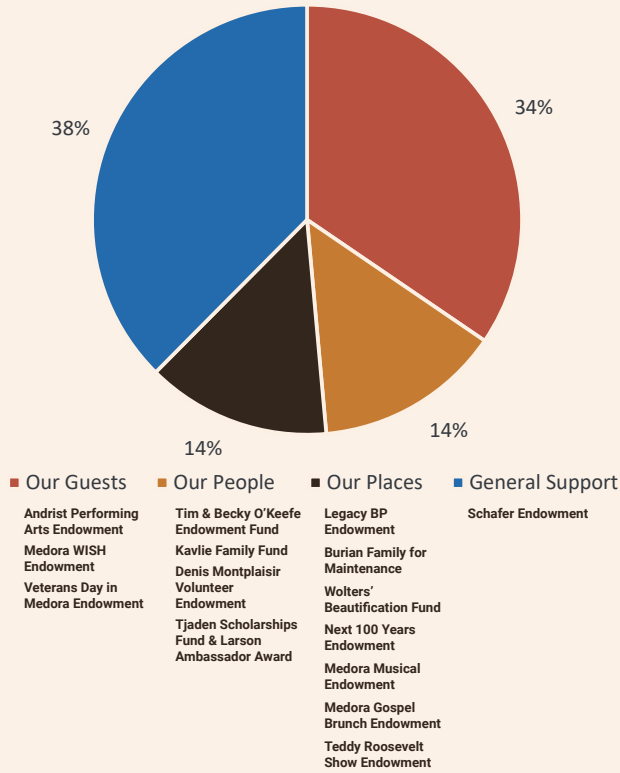
CURRENT TOTAL ENDOWMENT

\$11,530,634

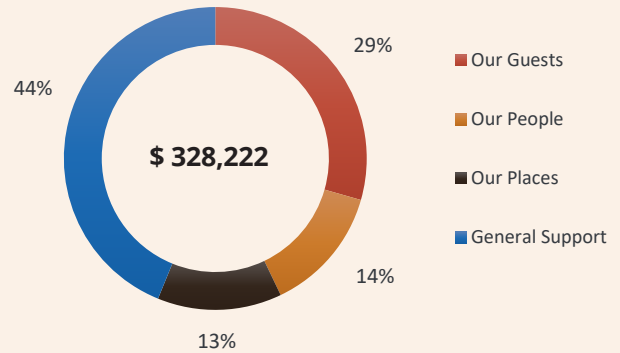
ENDOWMENT GIFTS IN 2022

324

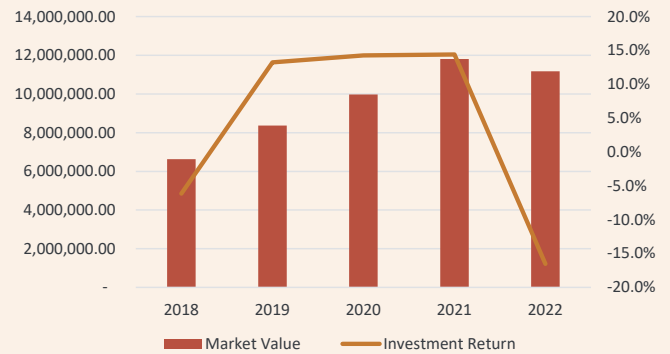
CURRENT ENDOWMENTS



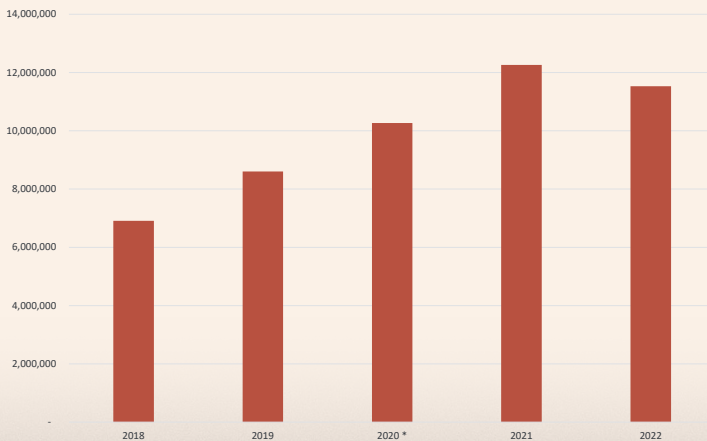
IMPACT DOLLARS USED 2021



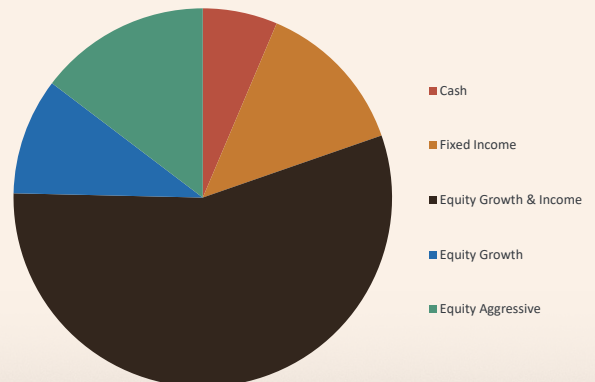
INVESTMENT PERFORMANCE



ENDOWMENT ASSETS



INVESTMENT PORTFOLIO ALLOCATION



It's American HISTORY Brought To Life!

Every summer since 2012, world-renowned Theodore Roosevelt reprisor Joe Wiegand has portrayed TR at Medora's Old Town Hall Theater.

You'll hear epic stories of Roosevelt's time in the Badlands hunting and ranching. The adventure began the day he stepped off a train in the town of Little Missouri in the fall of 1883 to hunt bison. Learn about his two ranches in the Badlands, how he tracked down and captured the notorious "Boat Thieves," and how his time in and around Medora informed policy decisions he made as president.

Joe also hosts the Badlands Chautauqua, where new and younger Theodore Roosevelt reprisors are trained and encouraged to portray TR with the Little Missouri river in their veins.

Joe's portrayals of Theodore Roosevelt will literally leave you wondering if TR has come back to life!

The Teddy Roosevelt Show Endowment is supporting this show with the goal to one day fully endow the operating expenses of The Teddy Roosevelt Show, allowing us to support the program in perpetuity.





The Most **INSPIRING** Show In Medora!

The Medora Gospel Brunch made its debut in 2016 as the Theodore Roosevelt Medora Foundation introduced audiences to a brand-new experience.

The Gospel Brunch has become a staple of the Medora experience for thousands of guests each year, including fifty-two performances in 2022!

Since 2016, over 33,000 people have enjoyed the high-energy show! This toe-tapping gospel revue will leave you humming all day long. Whether you grew up with gospel music or you would just like to listen to some great music with a good gospel origin story, the Gospel Brunch is for you!

Prepare to be dazzled by Gospel Brunch host Emily Walter, “The Queen of the West.” This will be Walter’s eighth year anchoring the show that she calls one of her absolute favorites.

This refreshed gospel celebration includes a full band and gospel quartet—along with endless helping of egg bake, pastries and other brunch favorites!

The Medora Gospel Brunch Endowment is supporting this show with the goal to one day fully endow the operating expenses of the Medora Gospel Brunch, allowing us to support the program in perpetuity.

ENDOWED WITH

A MEANINGFUL MISSION

Medora WISH Endowment was created by Don and Pat Clement and Michael and Vicki Zaun with the purpose to create more free opportunities for kids in Medora.

After all, it was Theodore Roosevelt Medora Foundation founder Harold Schafer who said, “We must try to find ways to keep costs low for families to attend Medora activities.”

Last year, over 1353 children enjoyed the Medora Musical for free during WISH Week July 2nd – 9th thanks to Medora WISH! and our generous donors!

Since its inception, the endowment has grown to more than \$2 Million with a goal of \$7 Million while gaining a growing list of WISH Wranglers.

WISH Wranglers, who contribute cumulative support of \$25,000 and above, help provide free tickets to the Musical as well as sponsoring special trips for people who otherwise would not be able to experience Medora due to physical, mental, or financial limitations.

CONTRIBUTE TO MEDORA WISH.

We invite you to join us by making a contribution to Medora WISH. Gifts of all levels will help the endowment grow and provide support for kids and families.

LEARN MORE AT:
FOUNDATION.MEDORA.COM/WISH



IMPACTFUL SUCCESS

.....



CELEBRATING OUR HEROS

Each night during the summer, the Medora Musical celebrates the United States and honors the men and women who serve in our military.

The Veterans' Day In Medora Endowment helps us to host Veterans' and Military Appreciation Day at the Musical. Attendance is free for active duty and retired military members.

In 2022, Veterans' and Military Appreciation Day welcomed 362 service members. This included The Veterans' of Foreign Wars and American Legion Color Guard from Mandan, N.D., and a social for Veterans' and their families at Tjaden Terrace.

Attendees also witnessed Pilot Paul Weyrauch fly a 1956 Beechcraft T-34 Mentor over the Badlands. Around 2300 of these planes were produced between 1954 and 1963 and were used to train pilots in the Navy and Air Force. The T-34 Mentor is owned by TRMF Board Member Kathy Neset. Four of her brothers are retired Air Force pilots. The planes are favorites at air shows across the United States.

The Veterans' Endowment has grown to more than \$480,000 with a goal of growing the fund by \$1 Million dollars each year as we continue our efforts to provide more benefits to our military heroes and their spouses.

LEARN MORE AT:
FOUNDATION.MEDORA.COM/VETERANS

CLASSICAL MUSIC IN THE BADLANDS

The Tim and Becky O’Keefe Fund for Arts is growing and providing opportunities to learn and enjoy the arts in Medora!

Last August, Classical Music in the Badlands featured Duo Cantabile for a performance on the Andrist Stage.

Duo Cantabile formed in 2012 by two musicians and professors at the University of North Dakota—cellist Dr. Simona Barbu and pianist Dr. Nariaki Sugiura. Simona is an internationally known cellist and Burgum endowed chair at UND. Sugiura is also internationally renowned as a pianist. Dr. Barbu’s endowment is made possible by Rick and Jody Burgum, both UND graduates, who recognize the critical role arts play in education.

Duo Cantabile has given performances, clinics, lectures, and master classes at prestigious institutions around the world.

This August, the Tim and Becky O’Keefe Fund for Arts will support a Medora Music Camp for ages 13-24 featuring Strings and Pianists.

The camp will provide a diverse offering of four days of classical music training, performance building, master classes, and concerts. Guest artists and prominent college faculty will perform and provide invaluable instruction to participating students in the heart of Medora!



For more information and to register, please visit Medora.com/MusicCamp

SCHOLARSHIPS & AWARDS

THE FOLLOWING EMPLOYEES DURING THE 2022 SEASON WERE
REWARDED FOR THEIR EXEMPLARY SERVICE

SCHOLARSHIPS

DEAN HILDEBRAND CONSERVATION AWARD

Sam Nebel

DON HUBBARD SCHOLARSHIP

McKenna Thompson

Hannah Johnson

SHANNON "SUNSHINE" LARSON SCHOLARSHIP

Nick Bjork

Charity Logemann

SHEILA SCHAFFER SUNSHINE AWARD

Diana Ghergelegiu

TIM JOHNSON SCHOLARSHIP

Beck Bektukhambeta

Katarina Crnogorac

WADE WESTIN SCHOLARSHIP

Van Rolle

Mary Reid

WINSTON SATRAN SCHOLARSHIP

Saidy Caro Guillo

TJADEN SCHOLARSHIP

Ana Castillo

Raga Kau

Avery Seadeek

Jordyn Sauvageau

Elimany Novas Pena

Petronela Miron

LARSON AMBASSADOR AWARDS

Matt Pavlik

Mike Metzger

Wander Auer

Matt Kallmeyer

John Tczap

Lea Brucker

Skyler Nelson

Benjamin Cabutage

Eugene Goettlicher

Travis Campbell

Natalia Jakowienko

Paul Gray

Shammar Edie

Dany Morelos

Connor Roche

Siahi Taufa

Mary Jo Larsen

Kristen White

Jolene Wilson

Garrett Tershel

Eddie Winemiller

Wild Horse Place

APARTMENTS

Employee Housing For Medora's Bright Future

Construction on the Wild Horse Place apartments has progressed through the winter and is on track to be completed this June.

"We have about 20 units committed to be occupied right now and working towards marketing the last 12 units so that when construction is complete, we have a full building to welcome workers to Medora," said TRMF Chief Operating Officer Clarence Sitter.

Contractors have been working through the cold and snow to complete the 32 unit building that will be occupied by several TRMF employees, National Park employees and other individuals wanting to live in Medora.

"Housing is important because quality of life is important," Sitter said. "We have people who are passionate about providing our guests with positive, life-changing experiences. It's important we provide them with a good place to live and help them be a part of the community of Medora."

Wild Horse Place has a combination of 1-, 2- and 3-bedroom units throughout the building.

TRMF employees say it's a game-changer to have secure, available, affordable housing in Medora.



“Wild Horse Place is an exciting opportunity to finally have adequate living space here in Medora,” TRMF System Administrator Anthony Olson said. “Before it was a challenge finding housing that was close-by that wouldn’t involve increased driving expenses and living expenses.”

“I think it is crucial to building a love for Medora by living in Medora and experiencing it in everyday life instead of only being in town during the workday and then leaving again,” said TRMF Park and Recreation Manager Andrew Coe. “It is an invaluable benefit to me and other employees alike!”

Permanent housing has long been identified as critical for Medora and the TRMF Board of Directors approved the project in November of 2021.

Competition for labor in the hospitality industry is fierce and Wild Horse Place fills a need and is essential for Medora’s future and is the final piece to a \$25 million campus that began in 2008 and includes the Spirit of Work Lodge, Life Skills Center, and Elkhorn Quarters.

Together, these building centralize employee training, education, dining, fitness, and recreation and provides significant parking to relieve pressure from the downtown area of Medora.



WESTERN HERITAGE



PRESERVE, ENHANCE, AND PROMOTE.

Theodore Roosevelt's first steps in the Badlands in the early morning of September 8th, 1883, were onto the sagebrush of what was known then as Little Missouri—just west of the Little Missouri River and what is now Medora.

The land Roosevelt first walked on ties the past to our future.

Roosevelt embodied the spirit of the west by embracing the strenuous life, ranching, riding, hunting, working hard at work worth doing, and staying true to his word.

The goal of our Western Heritage Project is to create that space for others that preserve, enhance, and promote the cowboy history and western heritage that can be found in Medora and the Badlands.

Western Heritage will allow us to better utilize the land west of the Little Missouri River—where Roosevelt first stepped off the train—to establish new and exciting attractions including an outdoor arena, practice arena, learning center, an interactive children's exhibit, and horse camping stalls. It's land already owned by TRMF and will allow us to create a space for positive, life-changing experiences.

**WHILE IT'S STILL IN ITS PLANNING STAGES,
WE HOPE YOU WILL BE INSPIRED BY THIS AMBITIOUS PROJECT.**



Liebe

JOHN & HANNELORE

John Davis met his wife while he was in the Army stationed in Germany. “He didn’t speak German and I didn’t speak English,” said Hannelore. But John was a good dancer, and that impressed her.

“We got married six months after.” Three times in one day, as a matter of fact. “They wanted to make sure we both understood what we were doing,” said a smiling Hannelore.

First, they got married in a courthouse. Then it was on to a German church. “Then we had dinner in the afternoon and then we went out to the (Army) post, and I had a priest. My guys in my unit were there and we had the American wedding—so that was that!” said John. That was 59 years ago this July.

When John was in high school, his family moved to Bismarck from their ranch near McClusky. His father, John E. Davis, was governor of North Dakota from 1957-1960. As fate would have it, they lived across the street from Harold and Sheila Schafer. A lifelong connection to Medora was born.

Back stateside, John couldn’t wait to take Hannelore to the Badlands. Their first trip was in the fall of 1957. A second love blossomed.

Hannelore took heart watching the way Harold and Sheila lived and remembered asking Harold why he gave so much away.

He said, “You know what I found out? If you give something, you get it ten times back. It’s a feeling you have in your body or soul. You just have to do it because it makes you feel good and then it’s just part of your life.”



John added, “He lived that way, and I watched him live that way, and Sheila was a great part of that.”

Lesson learned. “Just be kind, be nice, and it comes back to you,” said Hannelore.

With a deep love for each other, their family, and Medora, John, and Hannelore included TRMF as a beneficiary of their trust. They want their legacy of philanthropy associated with Medora.

“I wanted our kids and our grandkids and our six great grandkids to see and experience it and to keep it, to see what it really does for yourself,” said Hannelore.

“I know that it was kind of mixed emotions when I put the ranch in the trust. And it felt good. And I felt it was a very good feeling to know that it was something I could do and it’s not for me,” John said.

“Liebe.” It’s German for love. For John and Hannelore, it translates to love for each other, love for Medora, and love for the spirit of giving.



THE MEDORA LEGACY SOCIETY

The future of Medora depends on the continued support of special people who, like Harold and Sheila Schafer before them, recognize the potential that this town holds for positive, life-changing experiences through history, education, and entertainment.

LEARN ABOUT MORE WAYS TO GIVE AT
FOUNDATION.MEDORA.COM/GIVE



BULLY PULPIT AREA EXPANSION

**Exciting plans for developing an event barn and shooting ranges near Bully Pulpit
continue to move forward!**

Both attractions will be located at the site where the Eaton Brothers developed the nation's first dude ranch (Custer Trail Ranch) from 1882-1904. During that time, Howard Eaton met Theodore Roosevelt.

The event barn will be a versatile space that could host a variety of events including weddings, family reunions, and corporate retreats. The area provides a stunning setting with its historic charm and picturesque surroundings.

The shooting ranges are exciting features in the proposed development. They will offer a variety of shooting options, including rifle, shotgun, pistol, and archery. The ranges will be a unique attraction for visitors and tie into the storied hunting and ranching history of Medora and the Badlands.

“On that historic property, we will build an event barn which will include additional guest facilities and we are in the process of obtaining federal Pittman-Robertson Wildlife Restoration Act funding to support rifle, shotgun, pistol and archery shooting on the ranch,” TRMF Chief Projects, Facilities, and Strategy Officer Nate Huntington said. “The application for those funds goes through the North Dakota Game and Fish Department.”



.....

The event barn and shooting range will help attract new visitors to the area and provide existing visitors with unique and exciting experiences and keep the history of the place alive! The projects will also help TRMF fulfill its mission, vision, and values through high-quality entertainment, education, and history.

At TRMF, we are committed to working to ensure that the development is done in a responsible and sustainable way that respects the historic and natural significance of the Eaton Ranch site.

Plans are still under consideration by TRMF and its Board of Directors with a campaign targeted to begin in 2024.

We kindly ask that you consider giving to our event barn and shooting ranges, as your support helps us preserve and promote the legacy of Harold Schafer, Theodore Roosevelt, historic Medora, and the Badlands.

**PLEASE CONTACT A DEVELOPMENT OFFICER AT
701-223-4800 FOR MORE INFORMATION.**

**THANK YOU FOR YOUR CONTINUED SUPPORT IN HELPING US HONOR AND
CELEBRATE THESE GREAT LEGACIES.**

Theodore Roosevelt™

MEDORA FOUNDATION

MEDORA

405 East River Road South
Medora, ND 58645

PO Box 198
Medora, ND 58645

Phone
(701) 623-4444
(701) 223 4800

BISMARCK

1611 E. Century Ave, Suite 100
Bismarck, ND 58503

PO Box 1696
Bismarck, ND 58502

Website
medora.com
foundation.medora.com



HOW THE *Theodore Roosevelt*™ CONTINUES HIS LEGACY

MEDORA FOUNDATION

“Conservation means development as much as it does protection. I recognize the right and duty of this generation to develop and use the natural resources of our land; but I do not recognize the right to waste them, or to rob, by wasteful use, the generations that come after us.”

- Theodore Roosevelt, 1910

President Theodore Roosevelt was a practical conservationist. Today, we strive to follow his lead. To help celebrate the National Park Service that he helped shape so significantly, we've reignited our efforts to help ensure that our children, and our children's children, can enjoy our nation's wonders, too.

That's why, among other efforts, this report has been printed with a paper mixed with recycled sources. Helping American business while preserving natural forest. We believe President Roosevelt would say, "Bully!" to the balanced effort.



PLEASE RECYCLE